



宁波天誉机械设备有限公司

地址: 浙江宁波余姚市朗霞街道闻霞路1号

电话: 0574-62232648

传真: 0574-62232548

网址: <http://www.ch-tianyu.com>

邮箱: ty@ch-tianyu.com

全国统一服务热线: 4008-633-199

宁波天誉机械设备有限公司
NINGBO TIANYU MACHINERY EQUIPMENT CO.,LTD



企业简介 A Brief Introduction

宁波天誉机械设备，专注于细分行业先进工艺装备、智能化装备技术的研究、开发和制造生产。公司自创立以来，坚持对细分行业装备精耕细作，坚持质量第一，客户至上的经营理念，积极响应客户需求，日臻加深对客户产品特点与生产方式的理解，深化与客户在其产品生产需求，实现方式、产品更新等各环节领域的战略合作。

公司目前产品的主要涵盖：橡胶减震专用设备，汽车零部件装配设备，电机装配设备，非标检测设备以及通用液压设备等，产品广泛应用于汽配、电机、医疗机械，电器，塑胶，机械等众多行业。

公司具有丰富的机械设备领域的专业研发背景和实际经验，自创立以来，面对不断发展的市场环境，天誉机械始终坚持精益求精，不断超越的企业精神，与时俱进，坚持技术创新，积极研发自主知识产权，不断改进工艺流程，优化产品结构，同时，充分利用各种优势资源，引进国际先进的经营理念和管理系统，学习国际前沿技术，形成了天誉自己的核心竞争力。在行业内获得了良好的声誉。

公司拥有多项自主知识产权专利，并建立了规范完善的ERP管理系统，通过了ISO9001质量管理体系认证，先后为中国国家科学研究院、中国电力研究院、北京大学、兰州大学、中国科技大学等科研机构提供了科研压装设备。在工业应用领域，公司先后与国内各汽车零部件知名厂商及电机、五金、电子等各领域企业建立了良好的长期合作关系。

天道永恒，誉满天下。未来宁波天誉机械设备有限公司将继续秉持机械之心，坚持诚信、创新、学习、敬业、高效的核心价值，立足雄厚根基，朝着世界领先的装备制造商的方向不断迈进。

Ningbo Tianyu Machinery Equipment specializes in the research, development and manufacturing of advanced process equipment, intelligent equipment manufacturing technology in the subdivided trade structure. Upholding the engagement in devices for the subdivided trade structure and the operation philosophy of quality first, customer first, we have actively responded to customer needs, increasingly improved the understanding on customers' product characteristics and production methods as well as deepened strategic cooperation in various fields like production requirements, implementation mean and product updates, etc. with customers since its foundation.

Our products mainly involve rubber vibration insulating devices, auto parts assembly facilities, motor assembly facilities, non-standard testing devices and general hydraulic devices, etc., which are widely applied in various industries like auto parts, electrical machinery, medical machinery, electrical appliance, plastics, machinery and so on.

Our company has a wealth of professional R & D background and practical experience in mechanical equipment. Tianyu Machinery has always adhered to the enterprise spirit of making perfection more perfect and constantly gone beyond in the face of ever-accelerated market environment since its foundation. Moreover, it has changed with the times, focused on technological innovation, actively researched and developed its independent intellectual property rights to constantly improve the technical process and optimize the product structure. At the same time, Tianyu Machinery has formed its own core competitiveness and obtained good reputation in the industry owing to the full use of various advantages of resources, the introduction of international advanced management concepts and systems as well as learning of international cutting-edge technologies.

Possessing a number of independent intellectual property rights and patents, our company has established a standardized ERP management system and obtained the ISO9001 quality management system certification. We successively provided pressing devices of scientific research for the China National Academy of Sciences, China Electric Power Research Institute, Peking University, Lanzhou University and China University of Science and Technology and so on. Regarding the industrial application, long-term good cooperative relationships have also been set up with domestic auto parts well-known manufacturers and enterprises in all kinds of fields like electrical machinery, hardware, electronics and so on.

Tianyu develops eternally to spread its fame throughout the world. On the basis of its solid foundation, Ningbo Tianyu Machinery Equipment Co., Ltd. will constantly stride forward towards the goal of being a world-class equipment manufacturer by upholding the heart of machinery and adhering to its core values of integrity, innovation, learning, dedication and efficiency.



不断超越 精益求精

Constantly transcend,
make perfection more perfect

企业文化 ENTERPRISE CULTURE



企业愿景 成为世界领先的装备制造商
企业使命 为美好生活而奋斗，为客户送去价值
核心价值观 诚信、创新、学习、敬业

Enterprise vision: To become a world-leading equipment manufacturer

Enterprise mission: Strive for a better life and deliver value to customers

Core values: Integrity, innovation, learning, dedication



STRENGTH
CASTMAGNIFICENTLY
实力铸就辉煌



Company Qualification
公司资质



Cooperative Partner
合作伙伴



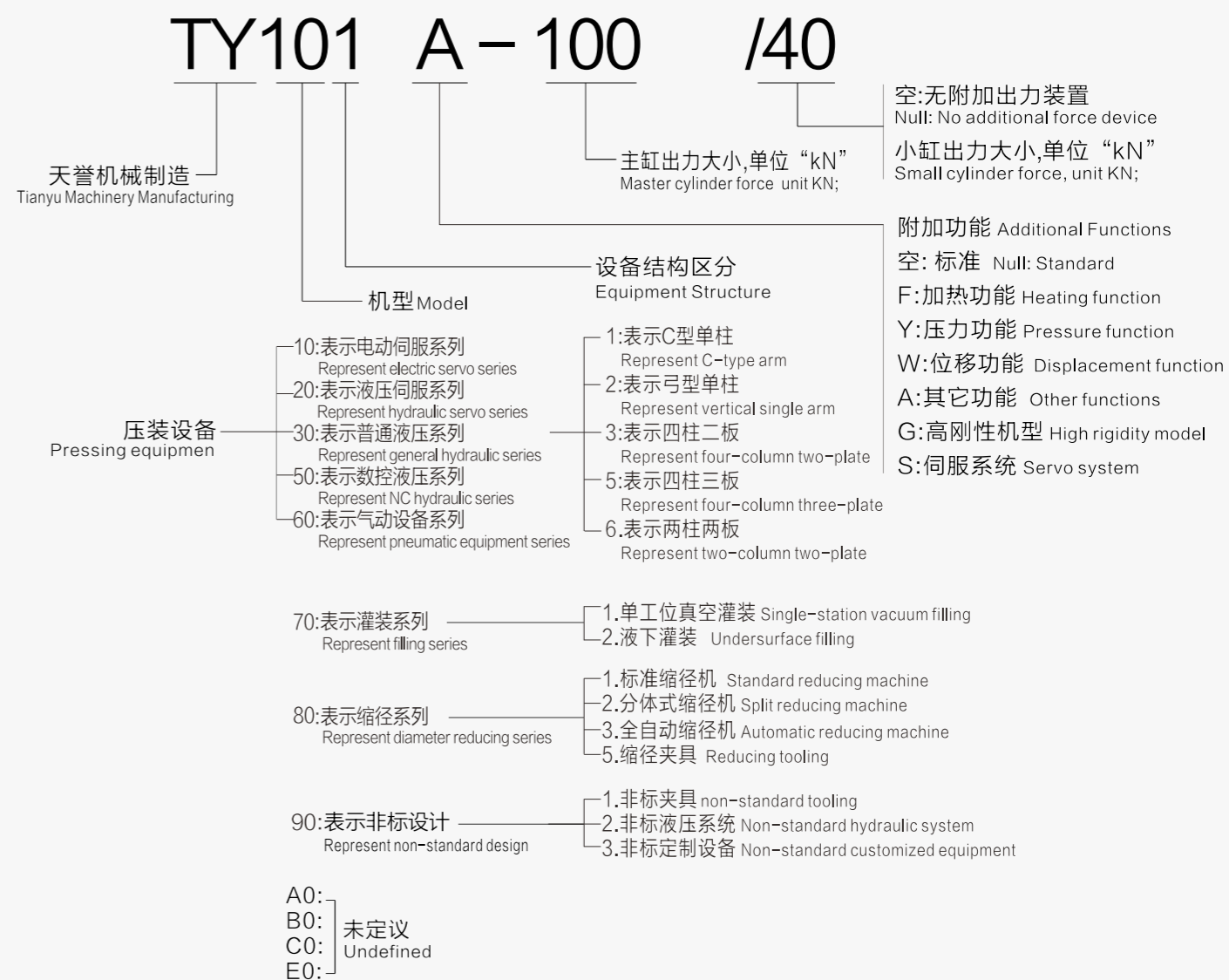
目录

Table of Content

电动伺服 Electric servo	TY103系列 电动伺服压装机 TY103 series Electric servo pressing	01/02
伺服液压 Servo hydraulic	TY203系列 伺服液压压装机 TY203 series Servo hydraulic pressing machine	03/04
数控液压 CNC hydraulic	TY502系列 数控液压压装机 TY502 series CNC hydraulic pressing machine	05/06
	TY502A系列 数控液压压装机 TY502A series CNC hydraulic pressing machine	07/08
灌装设备 Filling equipment	TY701系列 一体头定量真空灌装机 TY701 series integrity quantitative vacuum filling machine	09/10
	Ty702系列 液下灌装机 TY702 series Undersurface filling	11/12
缩径设备 Reducing equipment	TY801系列 标准缩径机 TY801 series Standard reducing machine	13/14
	TY802系列 分体式缩径机 TY802 series Split-type reducing machine	15/16
普通液压 General hydraulic press	TY301系列 C型单柱液压机 TY301 series C-type single arm hydraulic press machine	17/18
	TY302系列 弓形单柱液压机 TY302 series Vertical single-arm hydraulic press machine	19/20
	TY303系列 四柱两板液压机 TY303 series Four-column two-plate hydraulic press machine	21/22
	TY305系列 四柱三板液压机 TY305 series Four-column three-plate hydraulic press machine	23/24

配件 parts	TYD直列式系列伺服电缸 TYD in-line series servo electric cylinder	25/26
	TYD折返式系列伺服电缸 TYD turn-back series servo electric cylinder	27/28
	TYP系列拉杆油缸 TYP series rod cylinder	29
	TYZ系列快速油缸 TYZ series fast cylinder	30

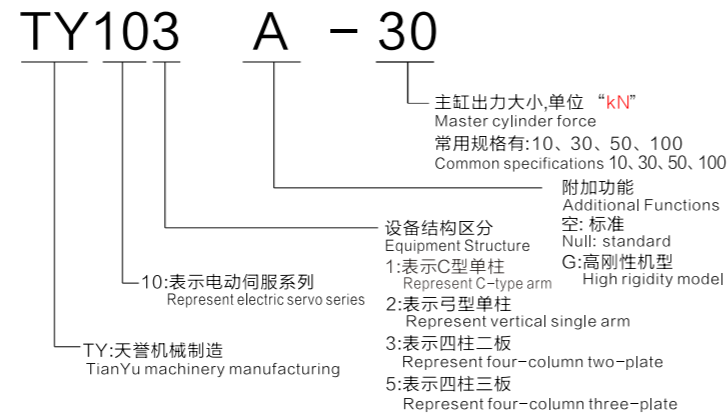
设备命名规则: equipment naming rule:



电动伺服—TY103系列电动伺服压装机 Electric servo—TY103 series electric servo pressing machine



设备命名 Equipment name



产品特点: Product features:

1. 本设备操作系统结合了工业4.0的数据需求,依据企业各部门的角色及企业质量管理理念,专门开发设计。
The operating system of the equipment is specially designed on the basis of roles of each department and quality management concept of the enterprise combining with the data requirements of industry 4.0.
2. 该设备具有高精度的定位功能,特别适宜工装无定位装置的产品组装.整机采取了高刚性设计,以减少受力后各部件的形变,造成定位误差增大。
Featuring high-precision positioning, the equipment is especially suitable for the assembly of tooling product without positioning devices. The whole machine is designed in high rigidity to reduce the deformation of each part upon stressing, causing increasing errors in positioning.
3. 该设备采用纯电气驱动,环保节能,省电。
The electricity-driven equipment is environmental and energy saving.

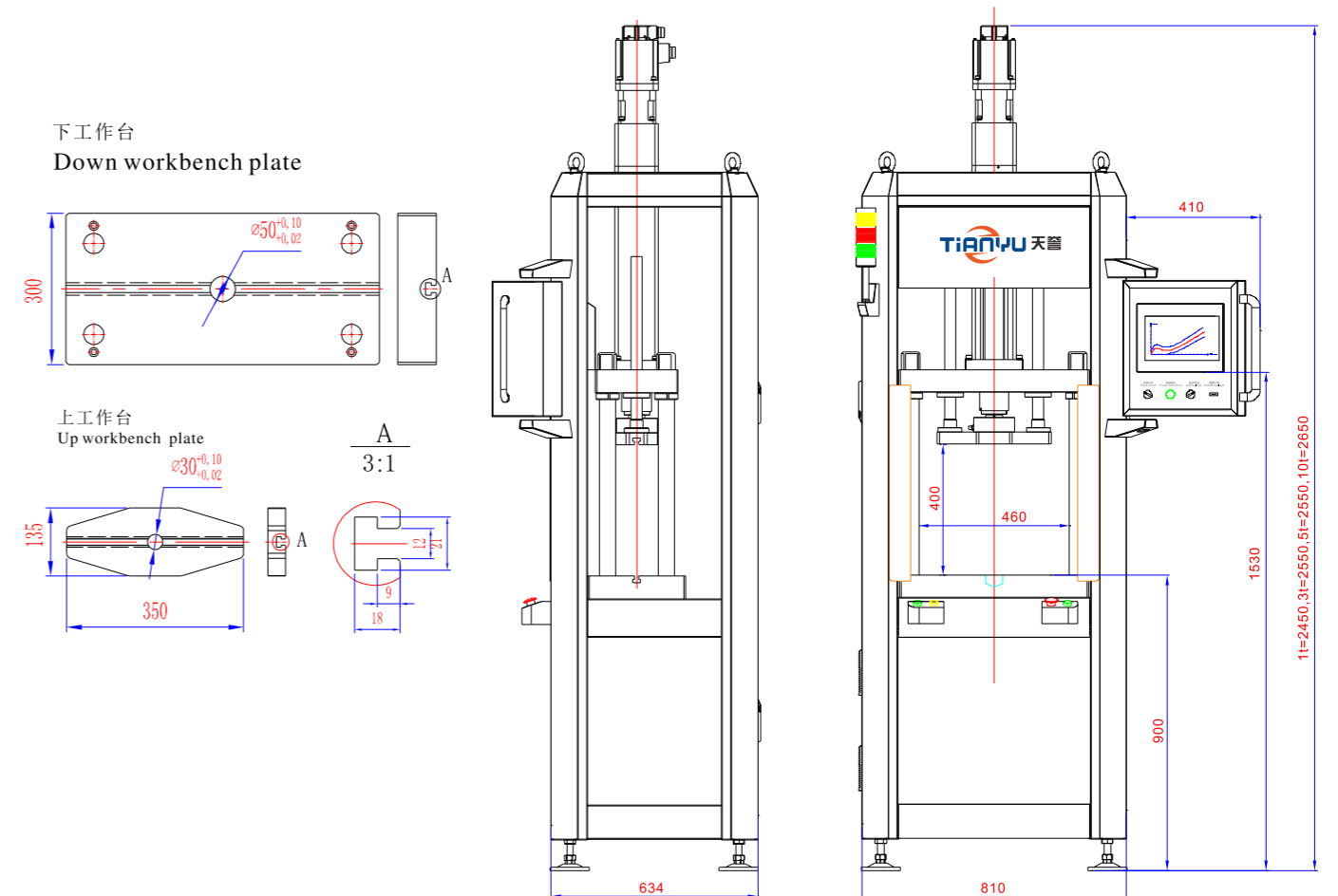
产品用途: Product use:

适宜压装力10-100kN的各种需要过盈装配的零部件组装
It's suitable for the assemblies of various parts that need interference fit within the pressing force of 10 kN to 100 kN.

主要功能: Main functions:

压装模式 Pressing model	定位压装 Positioning for pressing 恒压压装 Pressing in constant pressure 配方自动循环压装 Pressing of multiple components in cycles
质量监控 Quality monitoring	峰值检测 Pressure peak detection 到位检测 In-place detection 过盈检测 Interference fit detection
数据追溯 Data tracking	数据连网 Data networking 数据报表 Data statement 数据下载 Data download
防错功能 Error proofing function	模具零点核对 Tooling zero point detection 用户管理 User account management 配方管理 Tooling management 产品条形码扫描 Product barcode scanning 工装条形码扫描 Tooling barcode scanning 设备功能权限分配 Authority distribution of user accounts 条形码登录 Barcode login

产品线图 Product size chart



技术参数 Technical parameters

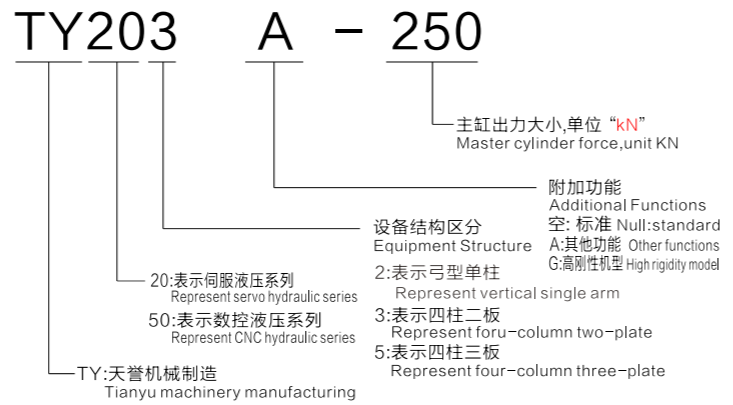
型号 Model	TY103-10	TY103-30	TY103-50	TY103-100
出力范围 Output range	3-10kN	3-30kN	5-50kN	10-100kN
电缸行程 Cylinder stroke	250mm	250mm	250mm	250mm
下降速度 Decreasing speed	1-250mm/s	1-135mm/s	1-100mm/s	1-166mm/s
回升速度 Rising speed	1-250mm/s	1-135mm/s	1-100mm/s	1-166mm/s
工进速度 Pressing speed	1-30mm/s			
位移控制精度 Displacement control precision	±0.01mm			
测力精度 Measuring precision	≤0.1%FS			
使用电源 Power supply	单相AC220V50Hz	三相AC380V 50Hz		
电机功率 Motor power	1.3kW	1.8kW	3kW	7.5kW
设备重量 Machine weight	500kg	650kg	700kg	900kg
设备每小时耗电量 Power consumption of the equipment per hour	≈0.5kW/h(600件/小时)	≈0.7kW/h(600件/小时)	≈1kW/h(600件/小时)	≈2kW/h(600件/小时)
丝杆动负荷 load in screw mobile	16.5kN	39kN	57.4kN	114kN

伺服液压—TY203系列液压伺服压装机

Servo hydraulic —TY103 series electric servo pressing machine



设备命名 Equipment name



产品特点: Product features:

1. 本设备操作系统结合了工业4.0的数据需求, 依据企业各部门的角色及企业质量管理理念, 专门开发设计。

The operating system of the equipment is specially designed on the basis of roles of each department and quality management concept of the enterprise combining with the data requirements of industry 4.0.

2. 该机采用液压伺服系统, 压力、流量均通过驱动器、伺服电机、传感器构成闭环系统, 不受油温、油液浓度影响, 大大提高了系统的稳定性, 相比传统液压回路, 省去大量的液压配件, 也降低了日后的故障率, 简化复杂的出厂调试。

This machine adopts the servo hydraulic system. Its stress and fluid flow form a close-loop system through the drive, servo motor and sensor. Without affecting by the hydraulic oil temperature and concentration, the system stability is largely improved. Compared with the traditional hydraulic circuit, it not only saves a large amount of hydraulic accessories, but also lowers the fault rate of the equipment and simplifies the complex commissioning procedures.

产品用途: Product use:

适宜压装力150-600kN的各种需要过盈装配的零部件组装
It's suitable for the assemblies of various parts that need interference fit within the pressing force of 150 KN to 600 KN.

主要功能: Main functions:

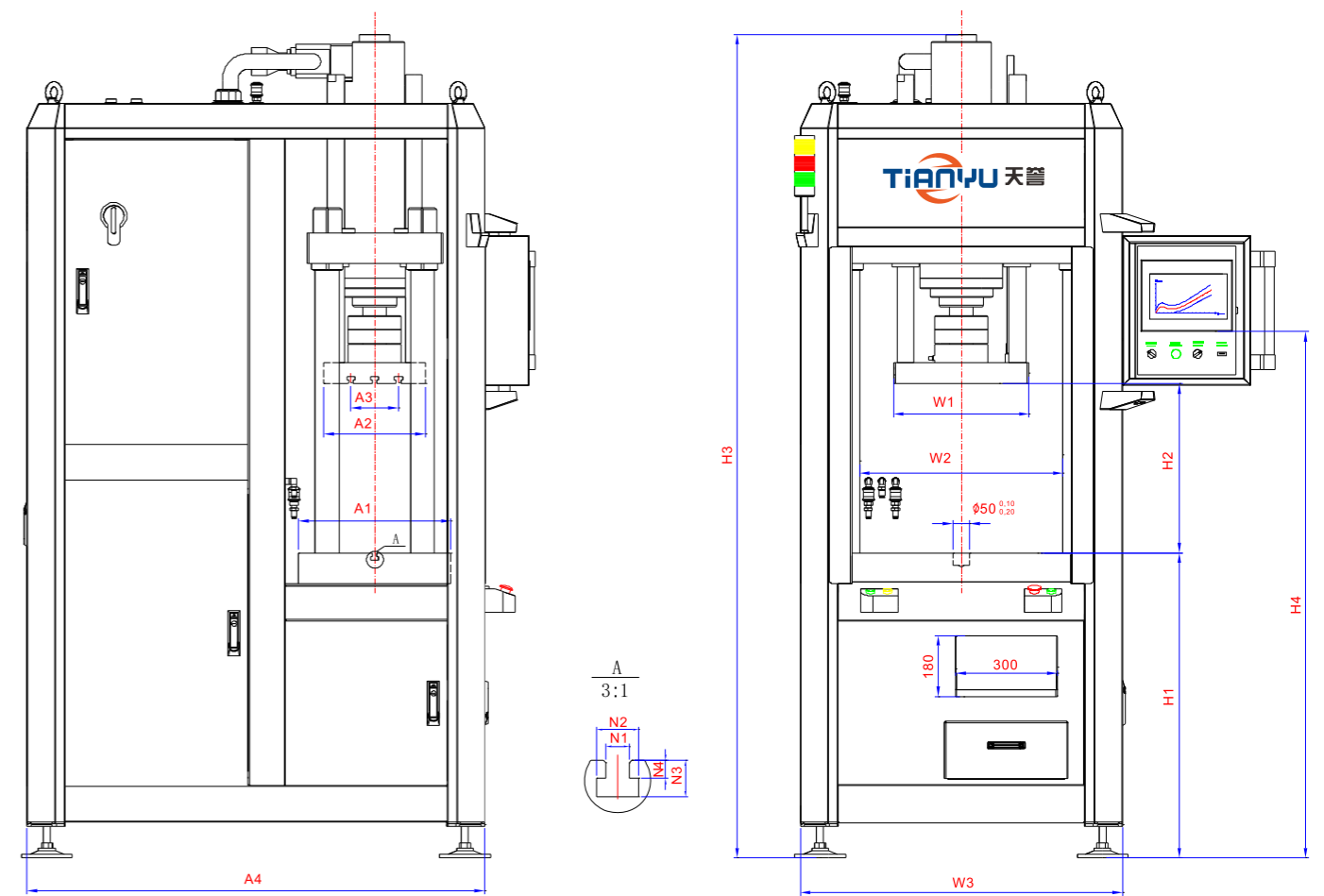
压装模式 Pressing model	定位压装 Positioning for pressing 恒压压装 Pressing in constant pressure 配方自动循环压装 Pressing of multiple components in cycles
质量监控 Quality monitoring	峰值检测 Pressure peak detection 到位检测 In-place detection 过盈检测 Interference fit detection
数据追溯 Data tracking	数据连网 Data networking 数据报表 Data statement 数据下载 Data download
防错功能 Error proofing function	模具零点核对 Tooling zero point detection 用户管理 User account management 配方管理 Tooling management 产品条形码扫描 Product barcode scanning 工装条形码扫描 Tooling barcode scanning 设备功能权限分配 Authority distribution of user accounts 条形码登录 Barcode login



机器外形尺寸表 Machine size table

项目 Item	H1	H2	H3	H4	W1	W2	W3	A1	A2	A3	A4	N1-N2-N3-N4
TY203-150	900	500	2430	1400	600	400	950	450	300	140	1350	14-25-21-11
TY203-250	900	500	2430	1400	600	400	950	450	300	140	1350	14-25-21-11
TY203-400	900	500	2430	1400	600	400	950	450	300	140	1350	14-25-21-11
TY203-500	900	500	2500	1400	600	450	950	450	300	140	1350	18-32-28-14
TY203-600	900	500	2600	1400	600	450	1000	500	300	140	1350	18-32-28-14

产品线图 Product size chart



技术参数 Technical parameters

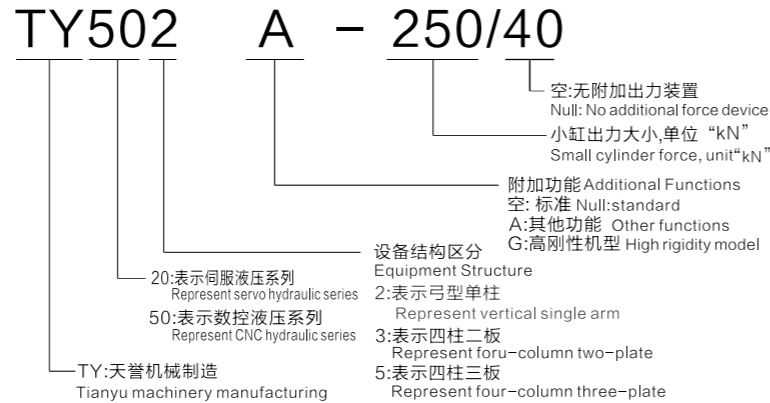
型号 Model	TY203-150	TY203-250	TY203-400	TY203-500	TY203-600
出力范围 Pressure range	15-150kN	25-250kN	40-400kN	50-500kN	60-600kN
液体压力 Liquid pressure	1.6-12.5Mpa	1.6-16.5Mpa	2-20Mpa	2-20Mpa	2-20Mpa
油缸行程 Cylinder stroke	400mm	400mm	400mm	400mm	400mm
下降速度 Decreasing speed	30-340mm/s	30-340mm/s	30-340mm/s	30-280mm/s	30-280mm/s
回升速度 Rise speed	30-340mm/s	30-340mm/s	30-340mm/s	30-280mm/s	30-280mm/s
工进速度 Pressing speed	2-30mm/s	2-30mm/s	2-30mm/s	2-30mm/s	2-30mm/s
电机功率 Motor power	8.7kW	8.7kW	8.7kW	8.7kW	11kW
设备重量 Machine weight	1700kg	2000kg	2500kg	3000kg	3500kg
位移控制精度 Displacement control precision	±0.02mm				
测力精度 Force sensor accuracy	≤0.1%FS				
使用电源 power supply	AC380V 50Hz				

如尺寸不能满足需求, 请于本司洽商
If the size can not meet the demand, please to the Secretary to negotiate

数控液压—TY502系列液压数控压装机 CNC hydraulic—TY502 series CNC hydraulic pressing machine



设备命名 Equipment name



产品特点: Product features:

1. 本设备操作系统结合了工业4.0的数据需求, 依据企业各部门的角色及企业质量管理理念, 专门开发设计。
The operating system of the equipment is specially designed on the basis of roles of each department and quality management concept of the enterprise combining with the data requirements of industry 4.0.
2. 该机采用数控液压系统, 通过比例阀与测力传感器构成压力闭环。
The machine adopts the CNC hydraulic system to form a pressure closed loop through the proportional valve and the force cell.

产品用途: Product use:

适宜压装力150-600kN的各种需要过盈装配的零部件组装
It's suitable for the assemblies of various parts that need interference fit within the pressing force of 150 kN to 600 kN.

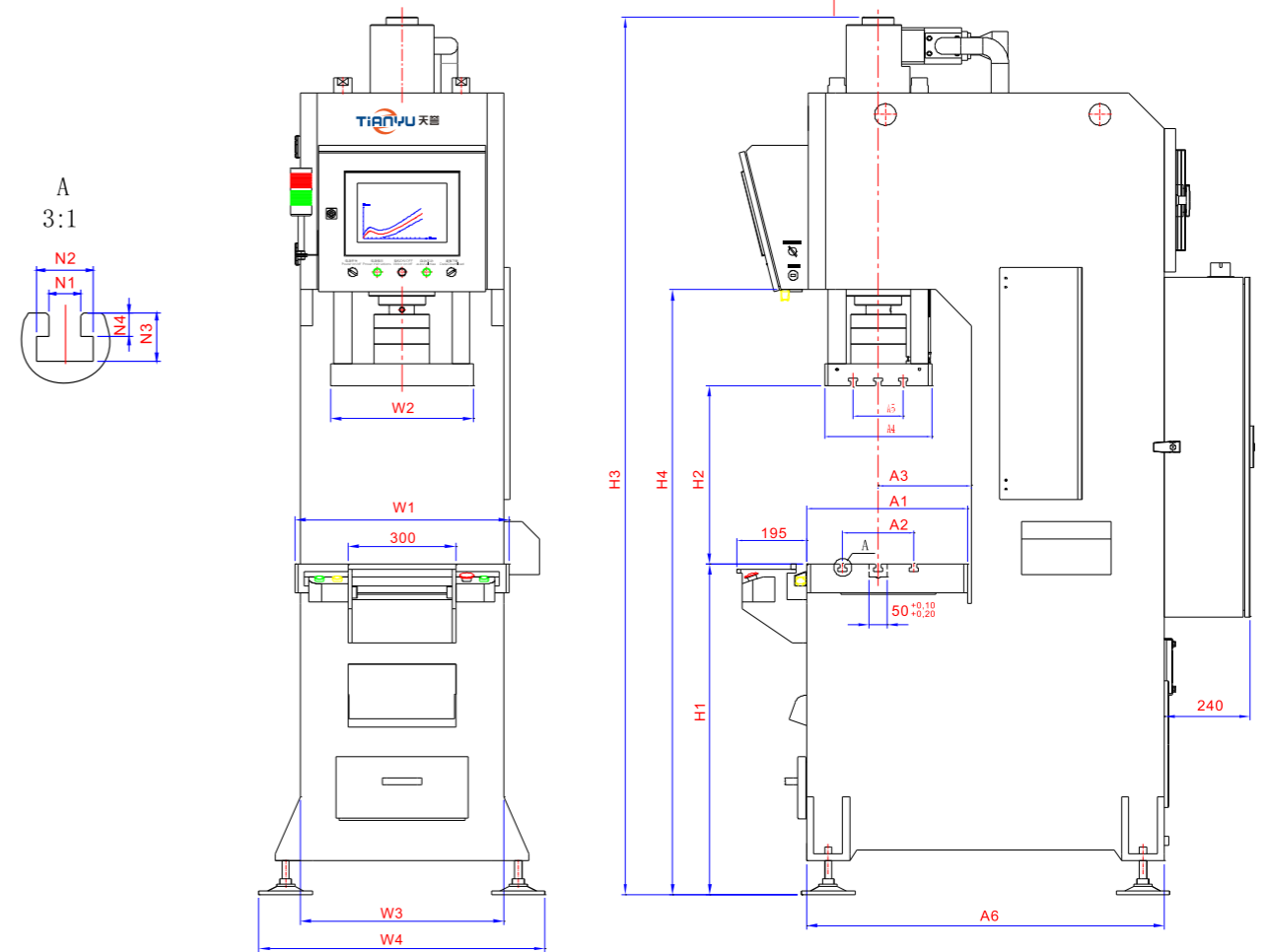
主要功能: Main functions:

压装模式 Pressing model	定位压装 Positioning for pressing 恒压压装 Pressing in constant pressure 配方自动循环压装 Pressing of multiple components in cycles
质量监控 Quality monitoring	峰值检测 Pressure peak detection 到位检测 In-place detection 过盈检测 Interference fit detection
数据追溯 Data tracking	数据连网 Data networking 数据报表 Data statement 数据下载 Data download
防错功能 Error proofing function	模具零点核对 Tooling zero point detection 用户管理 User account management 配方管理 Tooling management 产品条形码扫描 Product barcode scanning 工装条形码扫码 Tooling barcode scanning 设备功能权限分配 Authority distribution of user accounts 条形码登录 Barcode login

机器外形尺寸表 Machine size table

项目Item	H1	H2	H3	H4	W1	W2	W3	W4	A1	A2	A3	A4	A5	A6	N1-N2-N3-N4
TY502-150	900	500	2400	1680	600	400	570	770	450	200	260	300	140	1000	14-25-21-11
TY502-250	900	500	2450	1680	600	400	570	770	450	200	260	300	140	1040	14-25-21-11
TY502-400	900	500	2450	1680	600	400	570	770	450	200	260	300	140	1140	14-25-21-11
TY502-500	900	500	2500	1680	650	450	620	820	450	200	260	300	140	1200	18-32-28-14
TY502-600	900	500	2600	1680	700	500	670	870	500	200	310	350	140	1250	18-32-28-14

产品线图 Product size chart



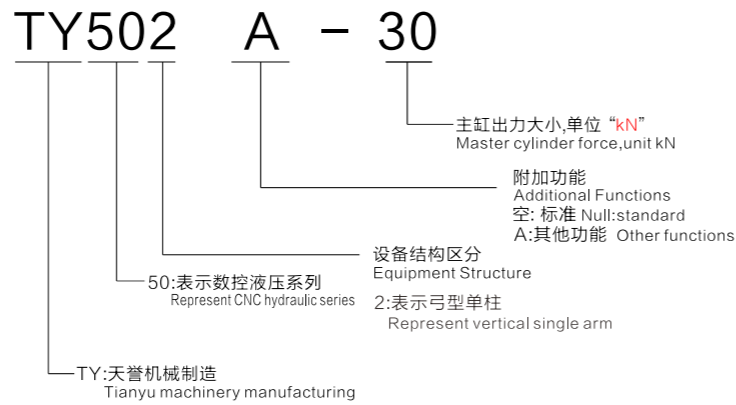
技术参数 Technical parameters

型号Model	TY502-150	TY502-250	TY502-400	TY502-500	TY502-600
项目Item					
出力范围 Pressure range	15-150kN	25-250kN	40-400kN	50-500kN	60-600kN
液体压力 Liquid pressure	1.6-12.5Mpa	1.6-16.5Mpa	2-20Mpa	2-20Mpa	2-20Mpa
油缸行程 Cylinder stroke	400mm	400mm	400mm	400mm	400mm
下降速度 Decreasing speed	190mm/s	180mm/s	180mm/s	190mm/s	210mm/s
回升速度 Rising speed	125mm/s	170mm/s	140mm/s	140mm/s	190mm/s
工进速度 Pressing speed	20mm/s	19mm/s	15mm/s	15mm/s	19mm/s
电机功率 Motor power	2.2kW	3.7kW	5.5kW	7.5kW	11kW
设备重量 Machine weight	1700kg	2000kg	2500kg	3000kg	3500kg
位移控制精度 Displacement control precision	± 0.02mm				
测力精度 Measuring precision	≤ 0.1%FS				
使用电源 Power supply	AC380V 50Hz				
如尺寸不能满足需求, 请于本司洽谈 If the size can not meet the demand, please to the Secretary to negotiate					



数控液压—TY502系列液压数控压装机 CNC hydraulic—TY502 series CNC hydraulic pressing machine

设备命名 Equipment name



产品特点: Product features:

1. 本设备操作系统结合了工业4.0的数据需求, 依据企业各部门的角色及企业质量管理理念, 专门开发设计。
The operating system of the equipment is specially designed on the basis of roles of each department and quality management concept of the enterprise combining with the data requirements of industry 4.0.
2. 该机采用数控液压系统, 通过比例阀与测力传感器构成压力闭环。
The machine adopts the CNC hydraulic system to form a pressure closed loop through the proportional valve and the force cell.

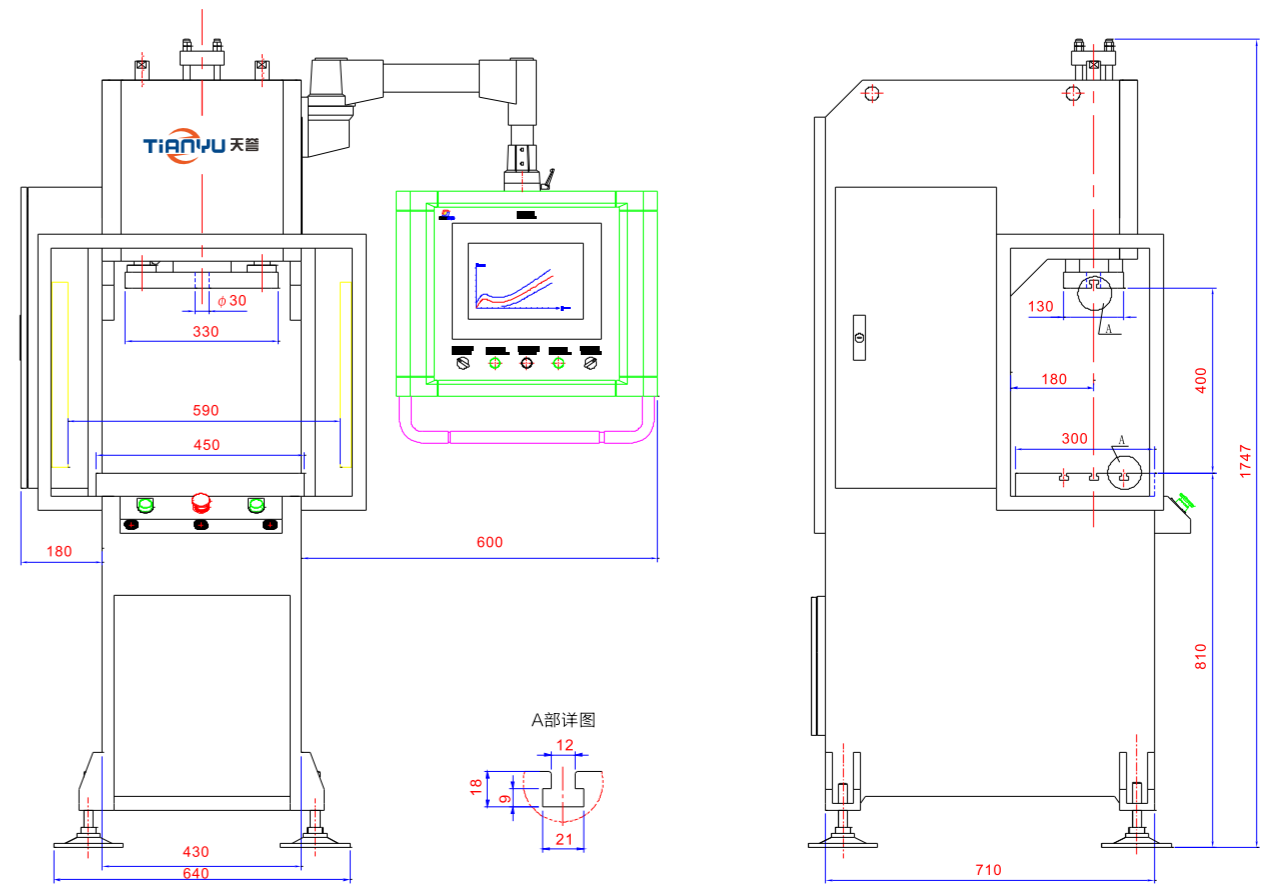
产品用途: Product use:

适宜压装力30-80kN的各种需要过盈装配的零部件组装
It's suitable for the assemblies of various parts that need interference fit within the pressing force of 30 kN to 80 kN.

主要功能: Main functions:

压装模式 Pressing model	定位压装 (Positioning for pressing) 恒压压装 (Pressing in constant pressure) 配方自动循环压装 (Pressing of multiple components in cycles)
质量监控 Quality monitoring	峰值检测 (Pressure peak detection) 到位检测 (In-place detection) 过盈检测 (Interference fit detection)
数据追溯 Data tracking	数据连网 (Data networking) 数据报表 (Data statement) 数据下载 (Data download)
防错功能 Error proofing function	模具零点核对 (Tooling zero point detection) 用户管理 (User account management) 配方管理 (Tooling management) 产品条形码扫描 (Product barcode scanning) 工装条形码扫描 (Tooling barcode scanning) 设备功能权限分配 (Authority distribution of user accounts) 条形码登录 (Barcode login)

产品线图 Product size chart



技术参数 Technical parameters

项目 Item	型号 Model	TY502A-30	TY502A-50	TY502A-80
出力范围 Pressure range		30kN	50kN	80kN
液体压力 Liquid pressure		10Mpa	16Mpa	16Mpa
油缸行程 Cylinder stroke		250 mm	250 mm	250 mm
下降速度 Decreasing speed		75mm/s	60mm/s	55mm/s
回升速度 Rising speed		110 mm/s	90 mm/s	75mm/s
使用电源 Power supply		AC380V 50Hz	AC380V 50Hz	AC380V 50Hz
电机功率 Motor power		2.2kW	2.2kW	3.7kW
位移控制精度 Displacement control precision		±0.02	±0.02	±0.02
测力精度 Measuring precision		0.05FS	0.05FS	0.05FS
设备重量 Machine weight		800kg	830kg	1000kg

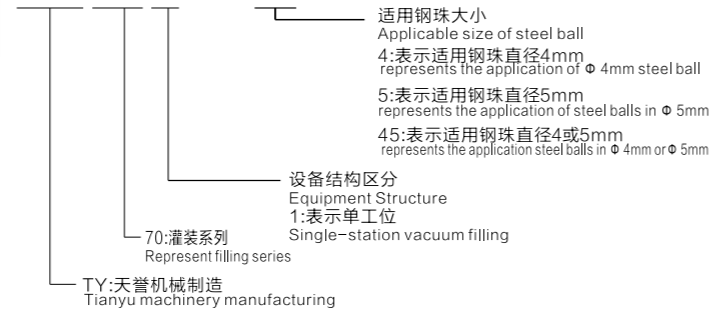
如尺寸不能满足需求, 请于本司洽谈
If the size can not meet the demand, please to the Secretary to negotiate

TY701系列 — 一体头定量真空灌装机

TY701-series quantitative vacuum filling machine

设备命名 Equipment name

TY701 - 4



产品介绍:Product introduction

- 1.采用一体头设计, 结构简单可靠。
Integrated design is adopted, featuring simple and reliable structure;
- 2.采用定量灌装, 直接由人机进行设定, 无需通过工装来改变灌装容量高效益、低能耗。
Quantitative liquid filling is adopted, which is directly set in the HMI. It's unnecessary to change the filling capacity through
- 3.液体灌入后,钢珠在全真空状态下进行压入,空气不会进入产品。
After filling the liquid, the steel ball is pressed under full vacuum, so as to ensure no air entering into the product;
- 4.产品上不会留有残余液体,无需人工抽除残液。
There is no residual liquid on the product; Thus, it's no need to pump the residual liquid manually.
- 5.优异的一体头设计,彻底将真空管道与灌装管道分离大大降低了液体被真空泵的吸入, 延长真空泵油的使用时间及泵的使用寿命。
The excellent integral design completely separates the vacuum pipe and the liquid filling pipe, which not only reduces the;
- 6.工作节拍小于,17秒。
Work rhythm is less than 17 seconds.

产品用途:Product use:

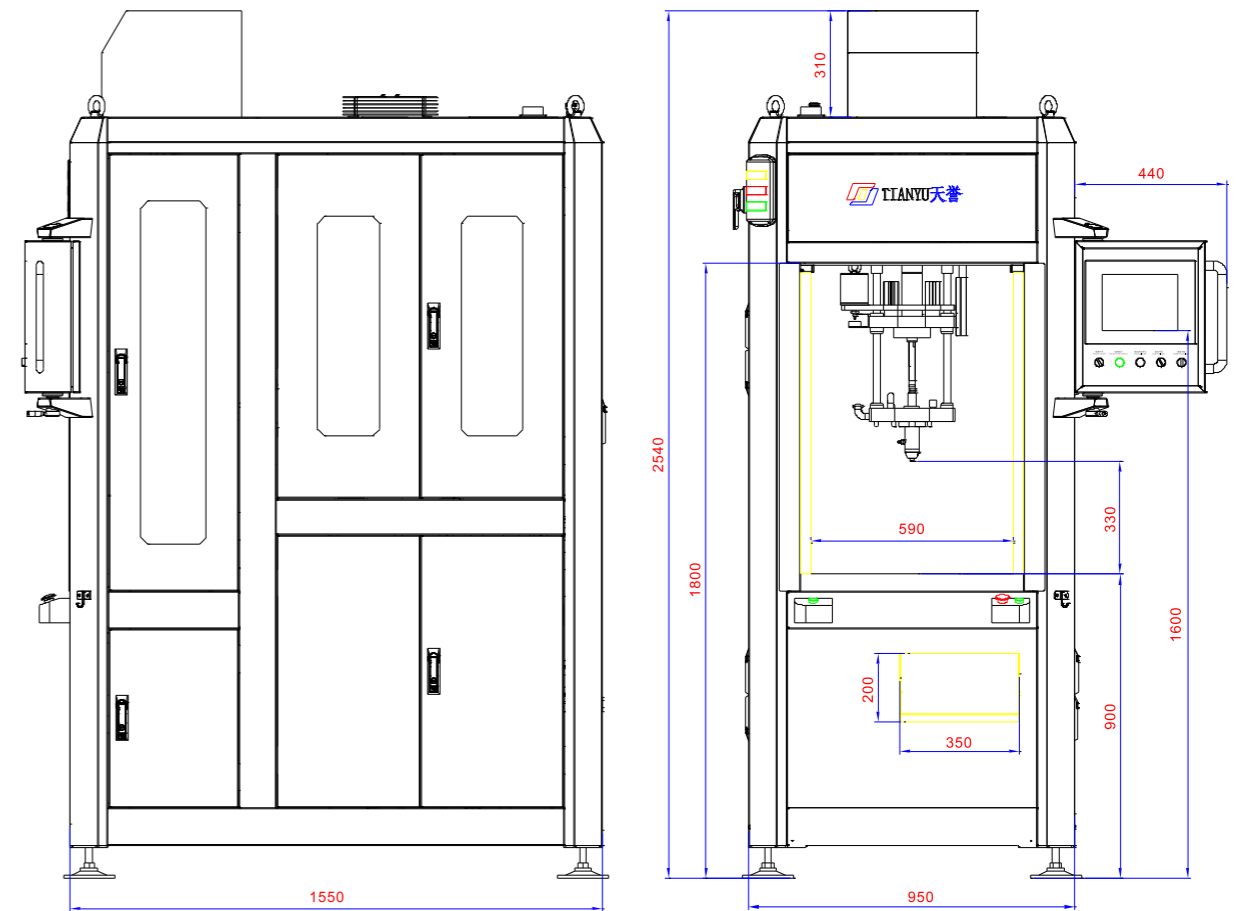
对汽车橡胶衬套、橡胶悬置进行液体灌注
Perform liquid filling on the automobile rubber bushing and

主要功能:Main functions:

- 钢珠过盈力检测 Detection of interference fit for steel balls
- 产品泄漏检测 Detection of product leak
- 数据连网 Data networking
- 数据报表 Data statement
- 数据下载 Data download
- 自动寻找产品核对 Automatic search for zero
- 用户管理 User account management
- 配方管理 User management
- 产品条形码扫描 Product barcode scanning
- 工装条形码扫描 Tooling barcode scanning
- 设备功能权限分配 Authority distribution of user accounts
- 条形码登录 Barcode login



产品线图 Product size chart



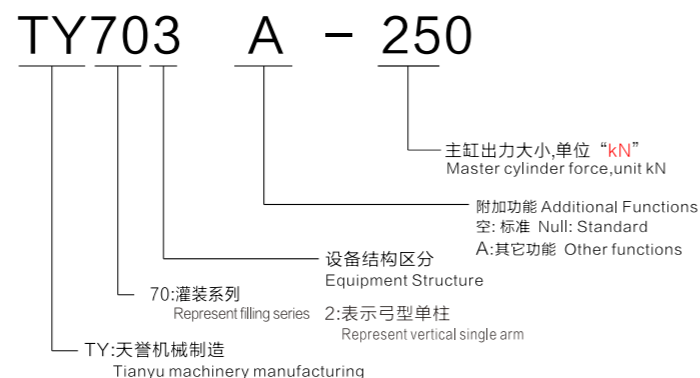
技术参数 Technical parameters

项目Item	型号Model	TY701-4	TY701-5	TY702-4	TY702-5
适用钢珠直径 Applicable diameters of steel balls		Φ 4	Φ 5	Φ 4	Φ 5
最大钢珠封装力 Maximum sealing to the steel ball		15kN	15kN	15kN	15kN
灌装节拍 Production rhythm		\leq 20s/件	\leq 20s/件	\leq 14s/件	\leq 14s/件
除泡真空度 Bubble removing vacuum degree		\leq 500Pa			
最小产品真空度 Minimum product vacuum degree Total power		乙二醇 \leq 100Pa		含水乙二醇 \leq 200Pa	
定量灌装精度 Quantitative liquid filling precision		\pm 0.5ml			
测力精度 Force-measuring precision		0.1%显示值			
使用电源 Power supply		AC380V 50Hz			
空气压力 Air pressure		0.5-1Mpa			
灌装介质 Filling medium		乙二醇/含水乙二醇/不易挥发的混合液体 Ethylene glycol/Aqueous ethylene glycol/Nonvolatile mixed liquid			
设备总功率 Total power		3.5kW			
设备耗电量 Power consumption		\approx 2kW/h(120件/分)			
设备电源 Equipment weight		800kg	800kg	1100kg	1100kg

TY703系列 液下灌装机



设备命名 Equipment name



产品特点: Product features:

1. 本设备操作系统结合了工业4.0的数据需求, 依据企业各部门的角色及企业质量管理理念, 专门开发设计。

The operating system of the equipment is specially designed on the basis of roles of each department and quality management concept of the enterprise combining with the data requirements of industry 4.0.

2. 该机采用数控液压系统, 通过比例阀与测力传感器构成压力闭环。

The machine adopts the CNC hydraulic system to form a pressure closed loop through the proportional valve and the force cell.

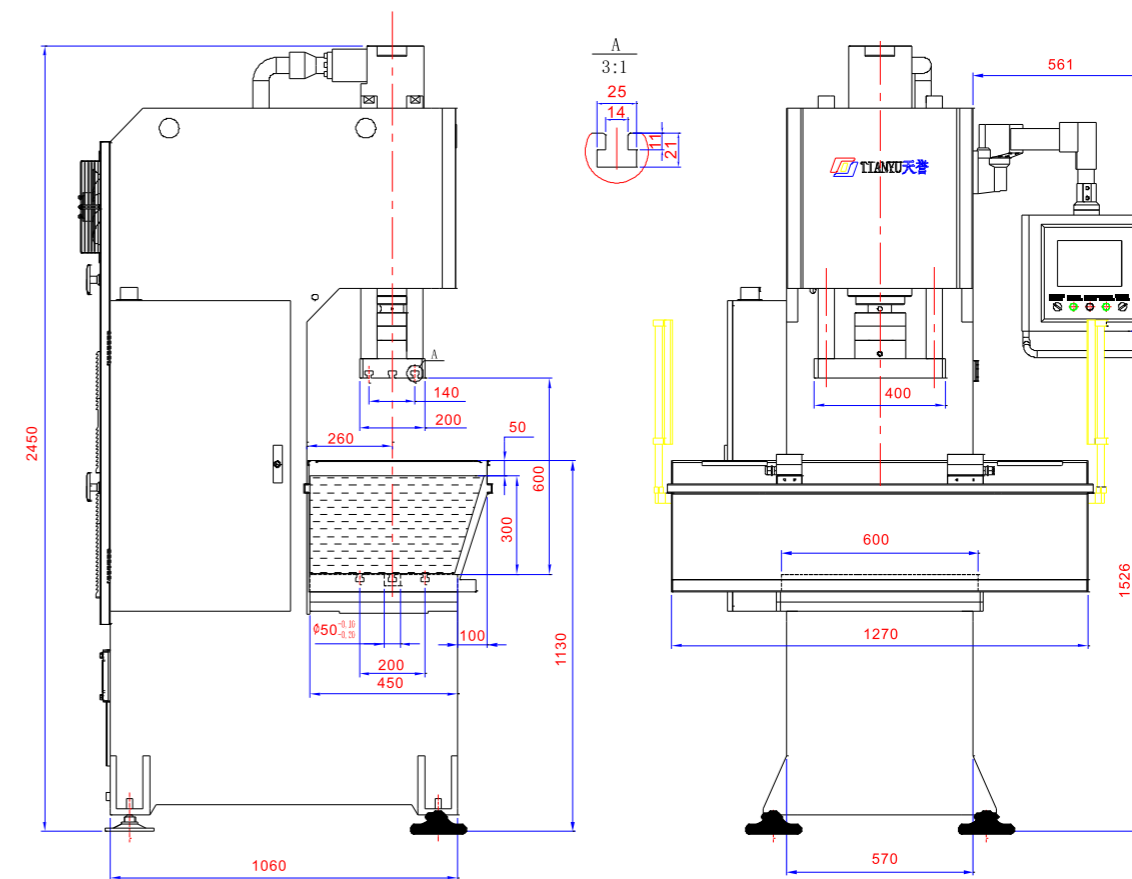
产品用途: Product use:

对汽车橡胶衬套, 橡胶悬置进行液下灌装。
Perform liquid filling on the automobile rubber bushing and rubber suspension;

主要功能: Main functions:

压装模式 Pressing model	定位压装(Positioning for pressing) 恒压压装(Pressing in constant pressure) 配方自动循环压装(Pressing of multiple components in cycles)
质量监控 Quality monitoring	峰值检测(Pressure peak detection) 到位检测(In-place detection) 过盈检测(Interference fit detection)
数据追溯 Data tracking	数据连网 Data networking 数据报表 Data statement 数据下载 Data download
防错功能 Error proofing function	模具零点核对 Tooling zero point detection 用户管理 User account management 配方管理 Tooling management 产品条形码扫描 Product barcode scanning 工装条形码扫描 Tooling barcode scanning 设备功能权限分配 Authority distribution of user accounts 条形码登录 Barcode login

产品线图 Product size chart



技术参数 Technical parameters

项目Item	型号Model	TY703-250	TY703-400
出力范围 Output range		25-250kN	40-400kN
液体压力 Liquid pressure		1.6-16.5Mpa	2-20Mpa
油缸行程 Cylinder stroke		400 mm	400 mm
下降速度 Decreasing speed		180 mm/s	170 mm/s
回升速度 Rising speed		170 mm/s	140 mm/s
工进速度 Rising speed		19mm/s	15 mm/s
电机功率 Motor power		3.7kW	5.5kW
设备重量 Machine weight		2000kg	2500kg
位移控制精度 Displacement control precision		± 0.02mm	
测力精度 Measuring precision		≤ 1%FS	
使用电源 Power supply		AC380V 50Hz	

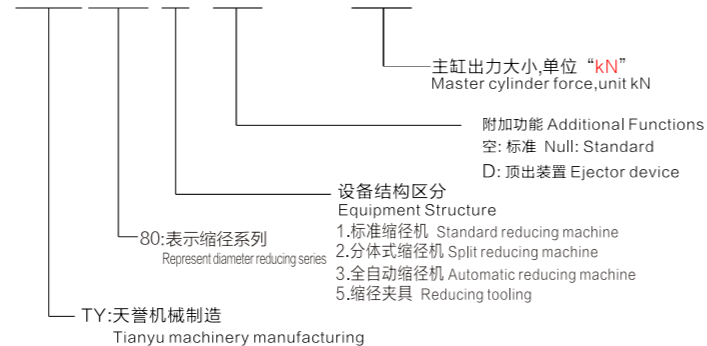
如尺寸不能满足需求, 请于本司洽谈
If the size can not meet the demand, please to the Secretary to negotiate

TY801系列 — 标准缩径机

TY801 series standard reducing machine

设备命名 Equipment name

TY801 A - 800



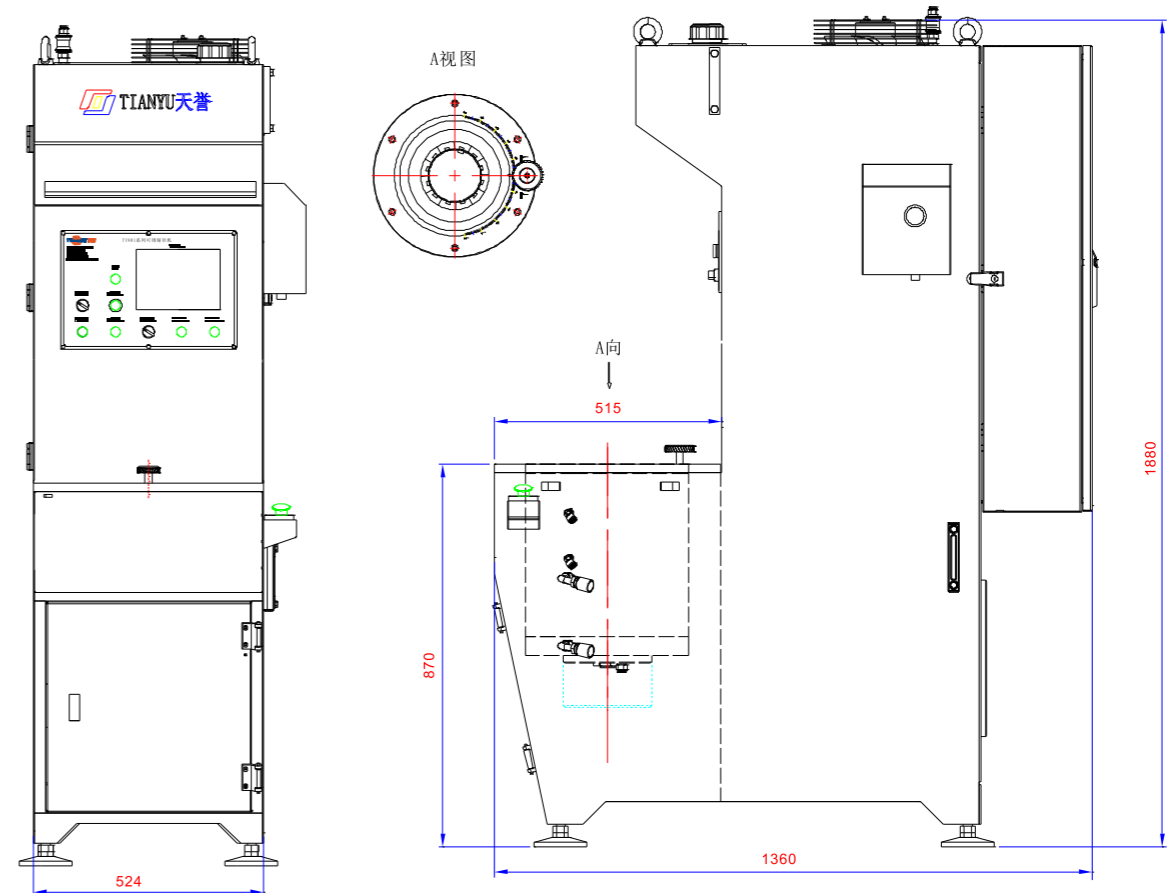
产品介绍: Product introduction

机身采用低碳整体焊接成C型结构，油温散热性好，搬运方便，适合流水线或单元化生产，是特别针对汽车橡胶减震器厂商专门研发，具有耗电小，生产效率高，产品投放面具具有0.005mm为单位的高精度机械死限为刻度调节盘，使产品缩径外径可调，不因设备或模具磨损而影响缩径产品外径变大，并时模具制造简单，费用大大减少。其优异的性能在汽车橡胶减震器行业已成为国内外的领先者，设备采用比例溢流阀配合压力传感器，再结合PLG可编程控制器形成闭环控制系统，以达到缩径力不随温度、电压、材料刚性的影响。

The machine is made of low-carbon steel, which is welded integrally into a C-type structure; Featuring good oil temperature heat dissipation and easy handling, it's suitable for the production in assembly line or unitization. The product is specially developed for the automotive rubber shock absorber with advantages of low power consumption and high production efficiency. There is a high-precision mechanical limit scale adjusting board at the unit of 0.005 millimeters on the product-throwing surface, making the outer diameter of the product adjustable. In this way, the outer diameter of the reducing product won't be affected by the equipment or mold wear, simplifying the manufacture of molds and greatly reducing costs. The product has become a front runner in the automobile rubber shock absorber industries at home abroad owing to its excellent performances. By coordinating the pressure sensor with the proportional relief valve, the equipment can realize that the reducing force is not affected along with the temperature, voltage and material rigidity with the combination of PLC programmable controller stroke closed-loop control system.

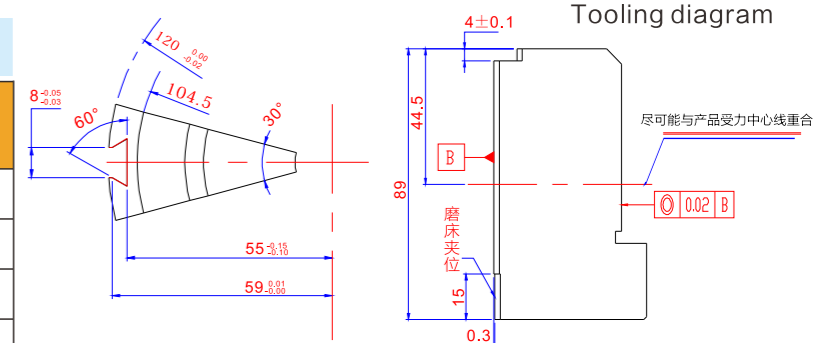


产品线图 Product size chart



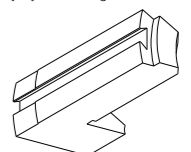
技术参数 Technical parameters

参数 Parameters	TY801-800
出力范围 Output range	400-800kN
液体压力 Liquid pressure	20Mpa
缩径节拍 Production takt	≈ 1200件/小时
最大缩径产品外径 Maximum outer diameter of reducing products	≤ 110mm
最大缩径长度 Maximum length of reducing products	≤ 100mm
外径重复精度 Repeated accuracy of outer diameter	≤ 0.02mm
外径不圆度 Out-of-roundness of outer diameter	≤ 0.03mm
最大锥度 Maximum taper	≤ 0.03mm/60mm
使用电源 Power supply	AC380V 50Hz
电机功率 Motor power	3.7kW
设备重量 Machine weight	800kg



制作工艺流程如下: Manufacturing process is presented as follows:

- 先用车床粗加工，余量1MM。
Rough machining is firstly conducted by the lathe with an allowance of 1mm;
- 热处理至HRC60-62。
Heat treatment is performed to HRC60-62;
- 车床精加工，预留0.3MM余量。
Finish machining is conducted by the lathe with an allowance of 0.3mm reserved;
- 上内外圆磨床精加工至所需尺寸。
An internal and external grinding machine is adopted to finish the product to required size;
- 激光打出产品图号，及12块的排列号。
Laser-printed product codes and order number of 12 pieces;
- 线割成12块，不能全部割破，预留0.5MM，全部割完敲破即可。
12 pieces are cut linearly, which cannot be cut completely by reserving 0.5mm. When all pieces
- 去毛刺
Deburring
- 材料: Materials:
CR12 CR12MOV



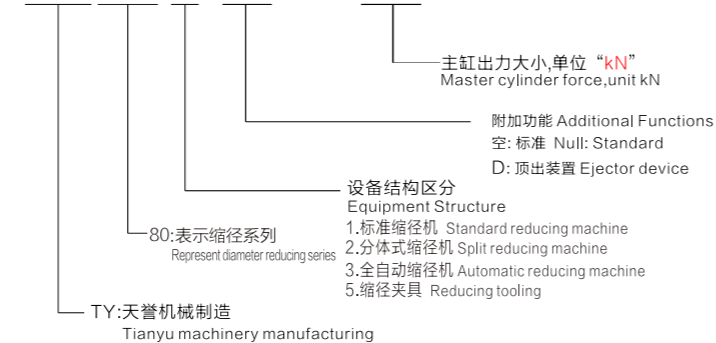
如尺寸不能满足需求，请于本司洽谈
If the size can not meet the demand, please to the Secretary to negotiate

TY802系列 一分体式缩径机

TY802 series Split-type reducing machine

设备命名 Equipment name

TY802 A - 800



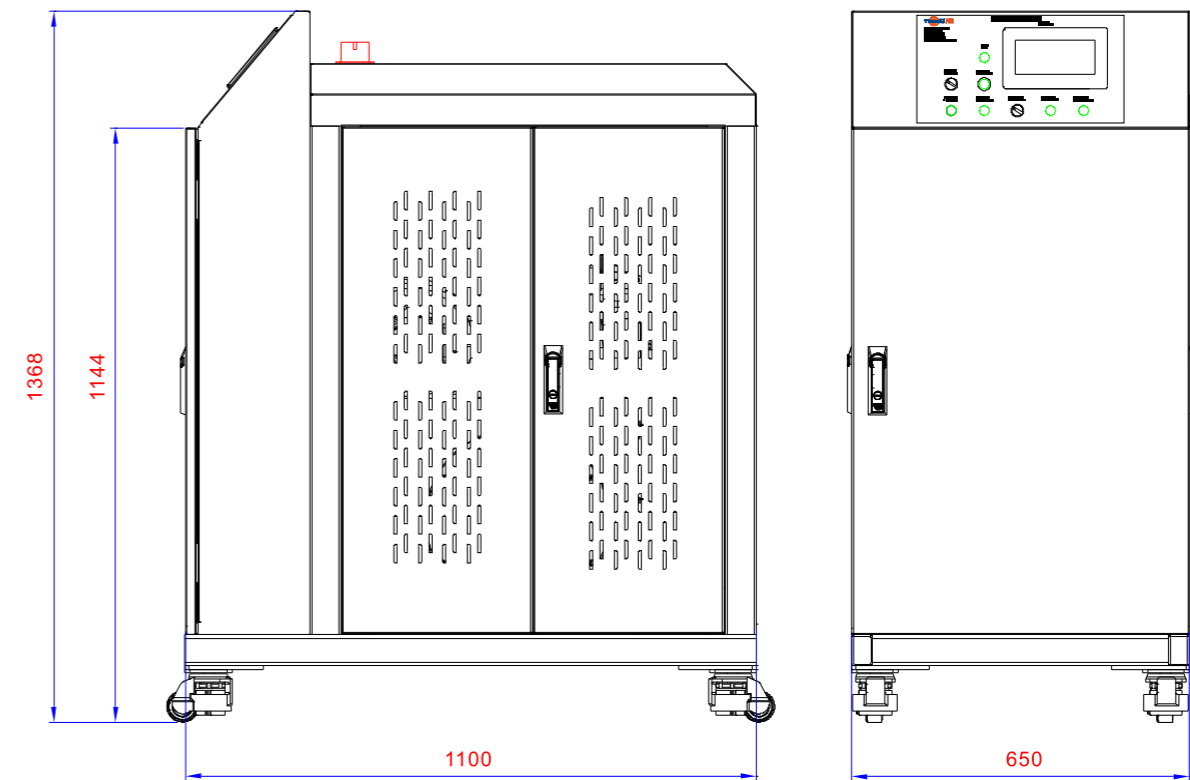
产品介绍:Product introduction

该设备是在TY801标准缩径机的基础上针对自动化流水线特别设计，也是特别针对汽车橡胶减震器厂商专门研发，具有耗电小，生产效率高，产品投放面0.005mm为单位的高精度机械死限位刻度调节盘，使产品缩径外径可调，不因设备或模具磨损而影响缩径产品外径变大，并使模具制造简单，费用大大减少。其优异的性能在汽车橡胶减震器行业已成为国内外的领先者，设备采用比例溢流阀配合压力传感器，再结合PLC可编程控制器形成闭环控制系统，以达到缩径力不随温度、电压、材料刚性的影响的效果。

The equipment is specially designed for the automatic assembly lines on the basis of the TY801 standard reducing machine, which is specially developed for the automotive rubber shock absorber with advantages of low power consumption and high production efficiency. There is a high-precision mechanical limit scale adjusting board at the unit of 0.005 on the product-throwing surface, making the outer diameter of the product adjustable. In this way, the outer diameter of the reducing product won't be affected by the equipment or mold wear, simplifying the manufacture of molds and greatly reducing costs. The product has become a front runner in the automobile rubber shock absorber industries at home and abroad owing to its excellent performances. By coordinating the pressure sensor with the proportional relief valve, the equipment can realize that the reducing force is not affected along with temperature, voltage and material rigidity with the combination of PLC programmable controller stroke closed-loop control system.



产品线图 Product size chart

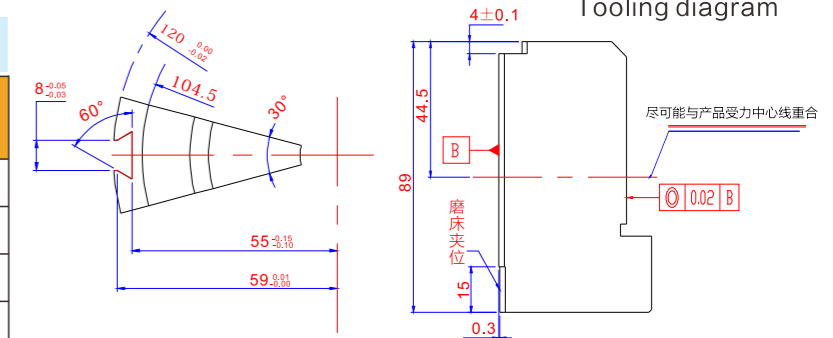


技术参数 Technical parameters

参数 Parameters	TY802-800
出力范围 Output range	400-800kN
液体压力 Liquid pressure	20Mpa
缩径节拍 Production takt	≈ 1200件/小时
最大缩径产品外径 Maximum outer diameter of reducing products	≤ 110mm
最大缩径长度 Maximum length of reducing products	≤ 100mm
外径重复精度 Repeated accuracy of outer diameter	≤ 0.02mm
外径不圆度 Out-of-roundness of outer diameter	≤ 0.03mm
最大锥度 Maximum taper	≤ 0.03mm/60mm
使用电源 Power supply	AC380V 50Hz
电机功率 Motor power	3.7kW
设备重量 Machine weight	800kg

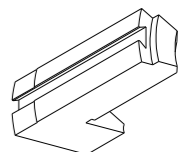
如尺寸不能满足需求，请于本司洽谈
If the size can not meet the demand, please to the Secretary to negotiate

夹具图纸 Tooling diagram



制作工艺流程如下: Manufacturing process is presented as follows:

- 先用车床粗加工，余量1MM。
Rough machining is firstly conducted by the lathe with an allowance of 1mm;
- 热处理至HRC60-62。
Heat treatment is performed to HRC60-62;
- 车床精加工，预留0.3MM余量。
Finish machining is conducted by the lathe with an allowance of 0.3mm reserved;
- 上内外圆磨床精加工至所需尺寸。
An internal and external grinding machine is adopted to finish the product to required size;
- 激光打出产品图号，及12块的排列号。
Laser-printed product codes and order number of 12 pieces;
- 线割成12块，不能全部割破，预留0.5MM，全部割完敲破即可。
12 pieces are cut linearly, which cannot be cut completely by reserving 0.5mm. When all pieces
- 去毛刺。
Deburring
- 材料: Materials: CR12 CR12MOV

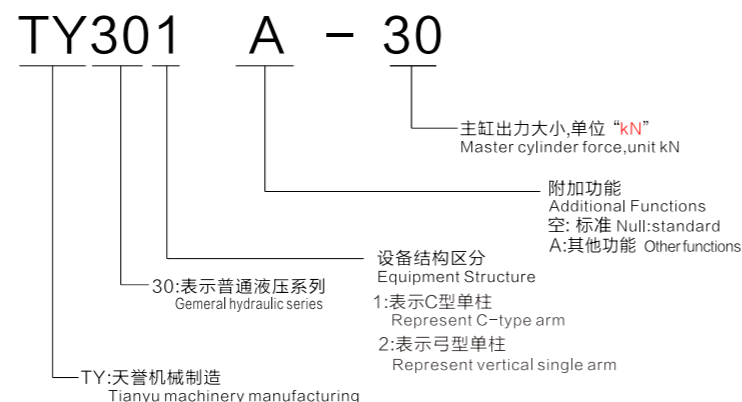


TY301系列 — C型单柱液压机

TY301 series C-type single arm hydraulic press

产品线图 Product size chart

设备命名 Equipment name



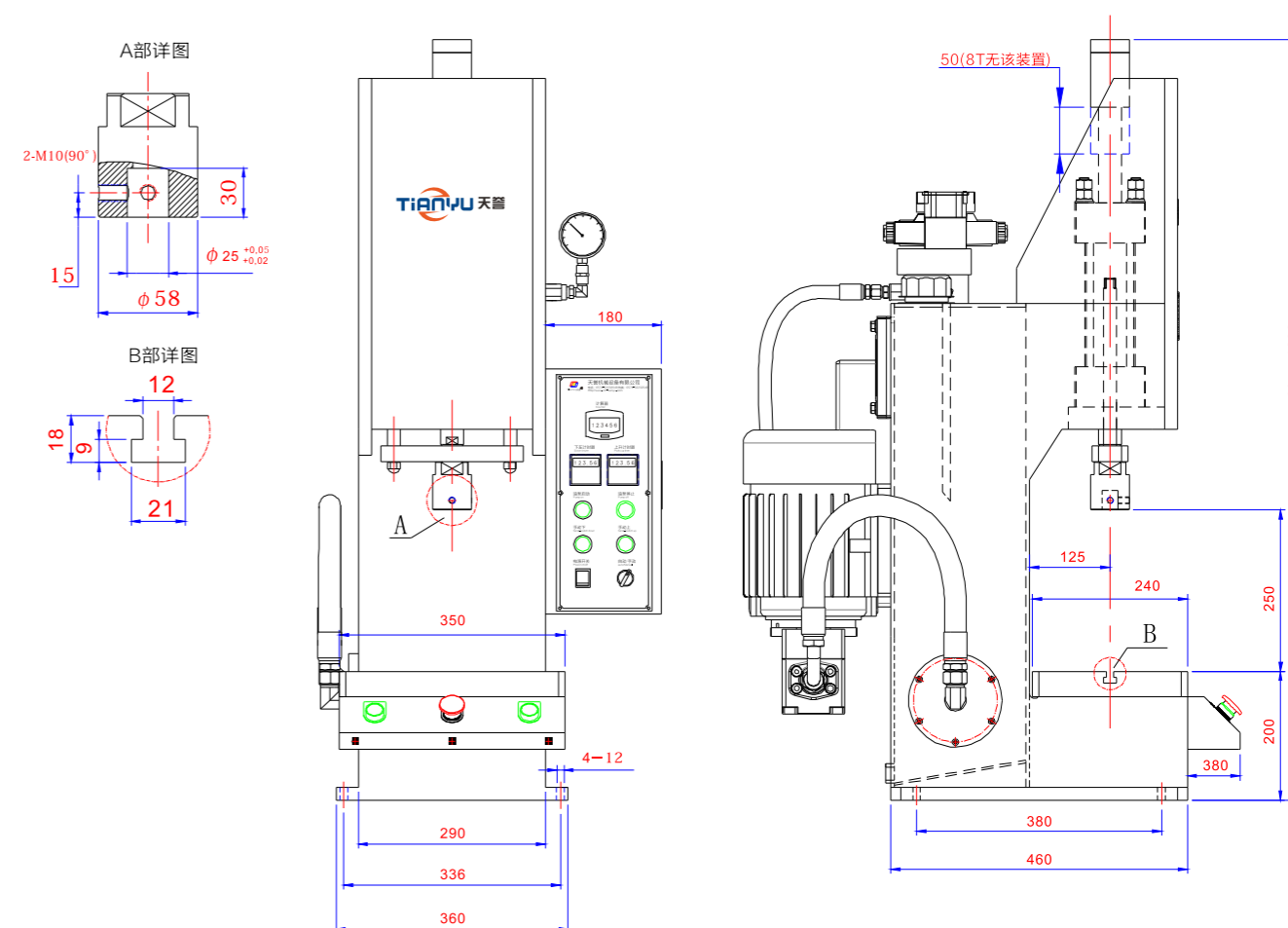
产品介绍:Product introduction

机身C型单臂式结构，三面开放、方便操作，焊接后通过振动、回火处理，以保证机架永不形变，主要用于各轴类压装,金属制品的浅拉伸、成型及压制，以及零件的弯曲、压印、套型，是内燃机、轻纺机械、轴类、轴承、电机、电器、汽车零部件厂商通用的小型压装设备。

The machine is C-type single-arm structure with three sides open, featuring convenient operation. No deformation can be guaranteed since the frame is tempered through vibration after welding. The machine is mainly used for press fitting of various small shafts, pull-up, molding and pressing of metal products as well as bending, embossing and dwelling size of parts. It's also a small pressing device that is commonly used in the manufacturers of internal combustion engines, textile machinery, shafts, bearings, motors, electrical appliances and auto parts.

主要功能:Main functions:

- 1.采用可调液压缸，可对压装行程进行精确定位
Customers can choose adjustable hydraulic cylinder or single-shaft extending cylinder, who can also choose a sensor for stroke control;
- 2.滑块采用上下计时器控制，操作简单，维护方便
The slider is controlled by up-down timers, featuring simple operation and convenient maintenance;
- 3.压力调整范围广，最小出力可调到2KN
With a wide range of pressure adjustment, the minimum output can be adjusted to 200KGF;
- 4.具有半自动、手动两种工作模式。
There are semi-automatic and manual tooling modes.



技术参数 Technical parameters

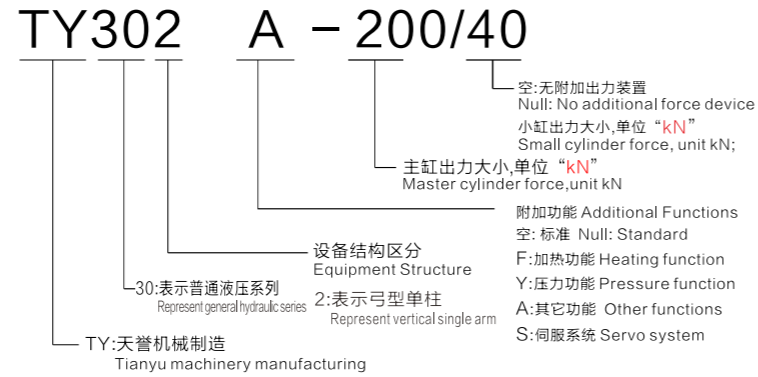
项目Item	型号Model	TY301-30	TY301-50	TY301-80
油缸出力 cylinder pressure		3-30kN	5-50kN	5-80kN
液体压力 Liquid pressure		10Mpa	13.2Mpa	16Mpa
油缸行程 Cylinder stroke		150mm	150mm	150mm
下降速度 Decreasing speed		90mm/s	63mm/s	55mm/s
回升速度 Rising speed		90mm/s	63mm/s	77mm/s
电机功率 Motor power		2.2kW	2.2kW	3.7kW
设备重量 Machine weight		220kg	225kg	250kg
使用电源 Power supply		AC380V 50Hz		

TY302系列 一弓形单柱液压机

TY302-series, vertical single-arm hydraulic press



设备命名 Equipment name



产品介绍: Product introduction

机身采用C型单臂式结构, 三面开放、方便操作, 焊接后通过振动、回火处理, 以保证机架永不形变, 主要用于各轴类压装, 金属制品的浅拉伸、成型及压制, 以及零件的弯曲、压印、套型, 是内燃机、轻纺机械、轴类、轴承、电机、电器、汽车零部件厂商通用的小型压装设备。

The machine is C-type single-arm structure with three sides open, featuring convenient operation. No deformation can be guaranteed since the frame is tempered through vibration after welding. The machine is mainly used for press fitting of various small shafts, pull-up, molding and pressing of metal products as well as bending, embossing and dwelling size of parts. It's also a small pressing device that is commonly used in the manufacturers of internal combustion engines, textile machinery, shafts, bearings, motors, electrical appliances and auto parts.

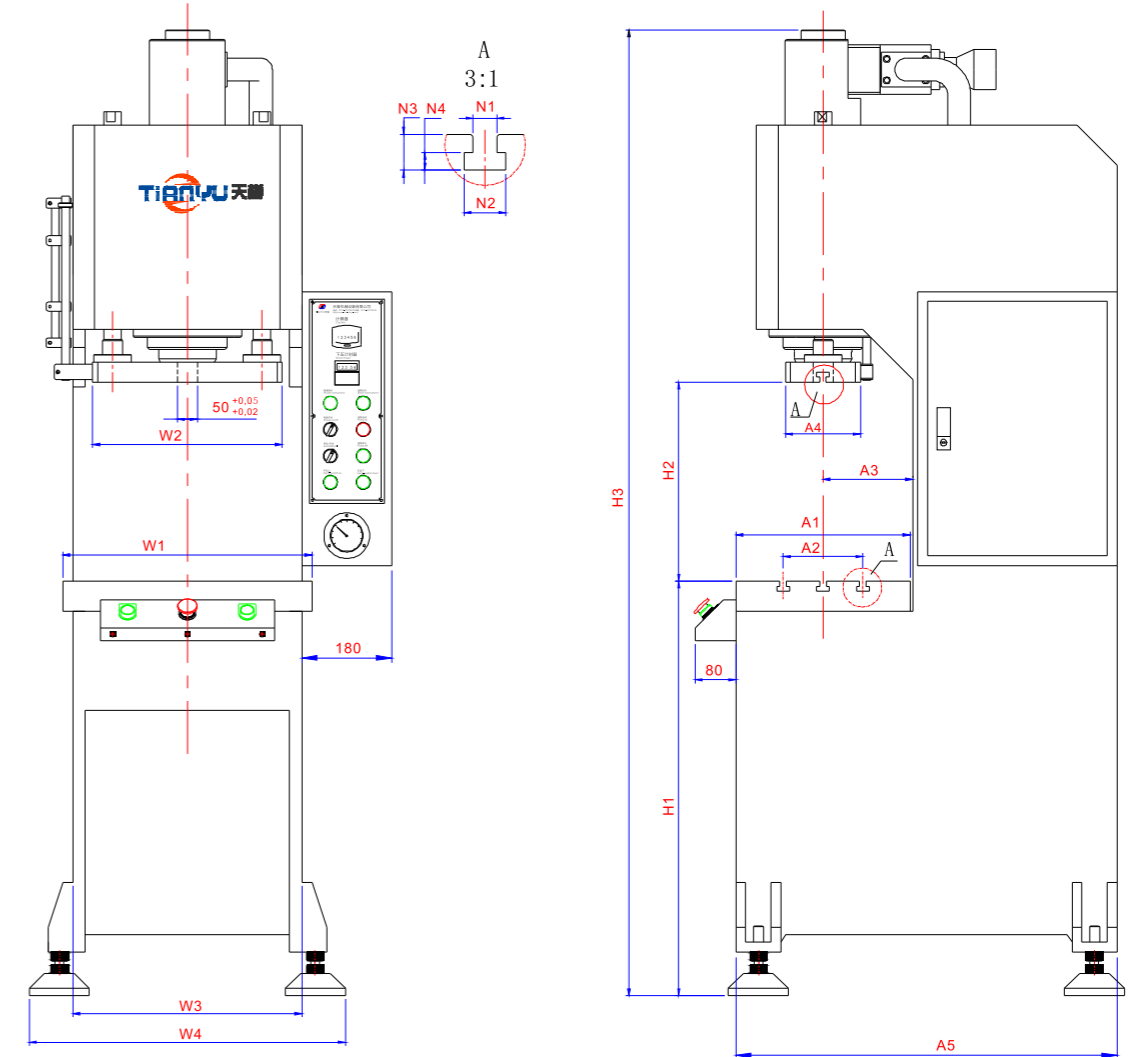
主要功能: Main functions:

1. 采用增速液压缸, 工作时先快后慢, 噪音低、高效益、耗低。
The boosting hydraulic cylinder is adopted, which is sometimes fast and sometimes slow during operation, featuring low noise, high benefit and low energy consumption.
2. 滑块采用上下电子感应器限位, 寿命长维护方便。
Both the top and the bottom of the slider are limited by the electronic sensors with advantages of long service life and convenient maintenance;
3. 设有压力保护、限位、半自动、手动控制功能。
It's equipped with functions like pressure protection, limit, semi-automatic and manual control;
4. 可依客户需要安装红外线护手装置
The infrared protection device can be installed as per customers' requirements.

机器外形尺寸表: Machine size table:

项目Item 型号Model	A1	A2	A3	A4	A5	W1	W2	W3	W4	H1	H2	H3	N1-N2-N3-N4
TY302-100	300	160	155	150	765	450	340	420	590	810	400	1880	14-25-21-11
TY302-200	350	160	180	150	765	500	370	470	640	810	400	1950	14-25-21-11
TY302-300	350	160	180	200	800	550	410	520	690	810	400	1950	14-25-21-11
TY302-400	400	200	205	200	850	620	470	590	760	810	400	1950	14-25-21-11
TY302-500	450	200	205	200	1000	700	500	570	840	810	400	2200	18-32-28-14

产品线图 Product size chart



技术参数 Technical parameters

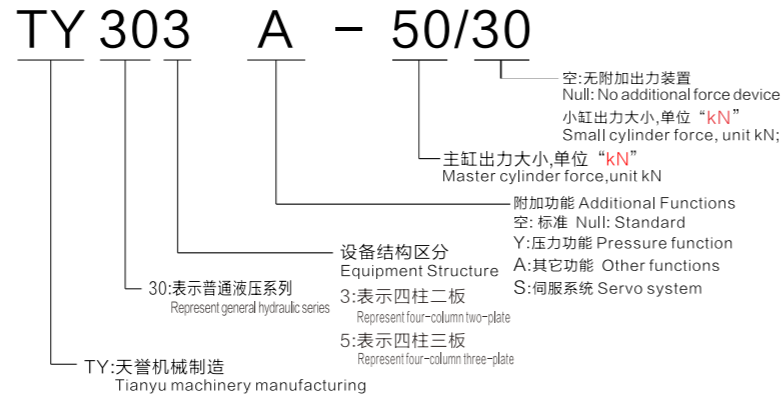
型号Model	TY302-100	TY302-200	TY302-300	TY302-400	TY302-500
油缸出力 cylinder pressure	30-100kN	40-200kN	50-300kN	50-400kN	70-500kN
液体压力 Liquid pressure	13Mpa	16.5Mpa	19.5Mpa	20Mpa	19.5Mpa
油缸行程 Cylinder stroke	250mm	250mm	250mm	250mm	250mm
下降速度 Decreasing speed	68mm/s	150mm/s	180mm/s	180mm/s	170mm/s
回升速度 Rising speed	90mm/s	100mm/s	130mm/s	120mm/s	125mm/s
工进速度 Rising speed	无NO	16mm/s	16mm/s	15mm/s	13mm/s
电机功率 Motor power	3.7kW	2.2kW	3.7kW	5.5kW	5.5kW
设备重量 Machine weight	800kg	1000kg	1200kg	1600kg	2000kg
使用电源 Power supply	AC380V 50Hz				

如尺寸不能满足需求, 请于本司洽谈
If the size can not meet the demand, please to the Secretary to negotiate

TY303系列 — 四柱两板液压机

TY303 series Four-column two-plate hydraulic press

设备命名 Equipment name



产品介绍: Product introduction

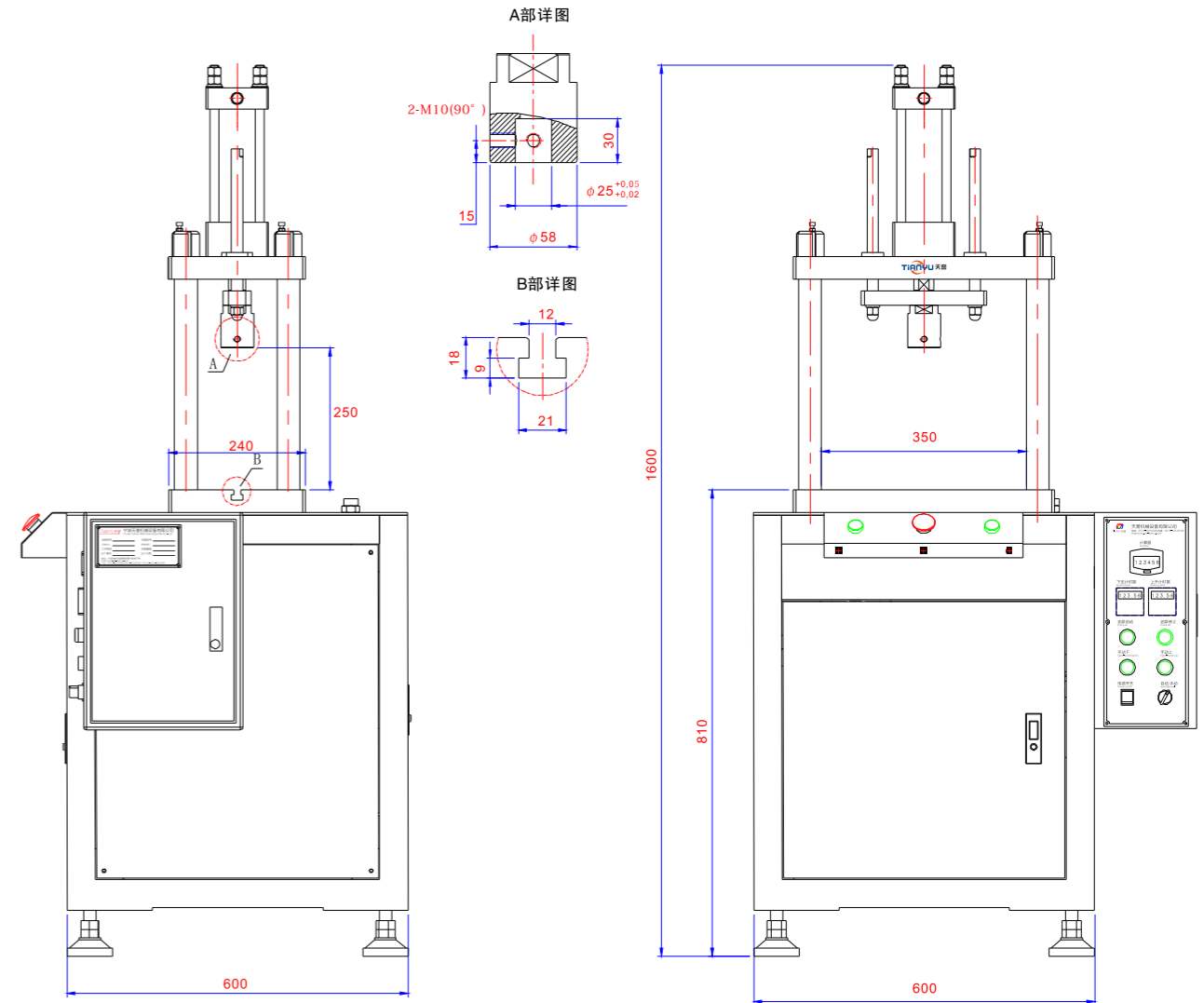
机身采用四柱结构, 相比C型单臂式结构垂直精度高, 主要用于各轴类压装, 金属制品的浅拉伸、成型及压制, 以及零件的弯曲、压印、套型, 是内燃机、轻纺机械、轴类、轴承、电机、电器、汽车零部件厂商的小型通用设备。

The machine adopts the four-column structure that has a high vertical precision that the C-type single-arm structure, which is mainly used for press fitting of various shafts, pull-up, molding and pressing of metal products as well as bending, embossing and dwelling size of parts. It's a small pressing device that is commonly used in the manufacturers of internal combustion engines, textile machinery, shafts, bearings, motors, electrical appliances and auto parts.

主要功能: Main functions:

1. 客户可选用可调液压缸或单轴伸出缸, 也可选择感应器进行行程控制。
Customers can choose adjustable hydraulic cylinder or single-shaft extending cylinder, who can also choose a sensor for stroke control;
2. 压力调整范围广, 最小出力可调到2KN。
With a wide range of pressure adjustment, the minimum output can be adjusted to 200KGF;
3. 具有半自动、手动两种工作模式。
There are semi-automatic and manual tooling modes.
4. 可选配减速下压功能
The decelerated pressing function is optional.

产品线图 Product size chart



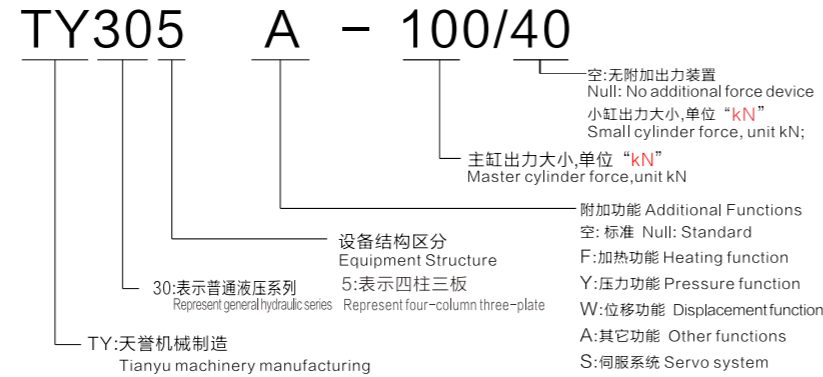
技术参数 Technical parameters

项目Item	型号Model	TY303-30	TY303-50	TY303-80	TY303-100
油缸出力 cylinder pressure		3-30kN	5-50kN	5-80kN	30-100kN
液体压力 Liquid pressure		10Mpa	16Mpa	16Mpa	13Mpa
油缸行程 Cylinder stroke		150mm	150mm	150mm	150mm
下降速度 Decreasing speed		60mm/s	60mm/s	58mm/s	68mm/s
回升速度 Rising speed		90mm/s	90mm/s	77mm/s	88mm/s
电机功率 Motor power		2.2kW	2.2kW	3.7kW	3.7kW
设备重量 Machine weight		220kg	225kg	250kg	270kg
使用电源 Power supply		AC380V 50Hz			

TY305系列 — 四柱三板液压机

TY305-series Four-column three-plate hydraulic press

设备命名 Equipment name



产品介绍: Product introduction

采用四柱三板式结构，活动板的垂直精度由四个精密导套控制，上下工作台面平行精度高。适合各种高精度的装配、裁切、压铸件的切边，塑料制品的整切，同时也适用于可塑性材料的压力加工、成型和粉末制品的压制

With the adoption of four-column three-plate structure, the vertical precision of the movable plate is controlled by four precise guide bushing. High-precision parallel up-down workbenches are suitable for all kinds of high-precision assembly and cutting, trimming of die press casting as well as whole cutting of plastic products, which are also applicable to press working and molding for plastic materials as well as pressing operation of powder products.

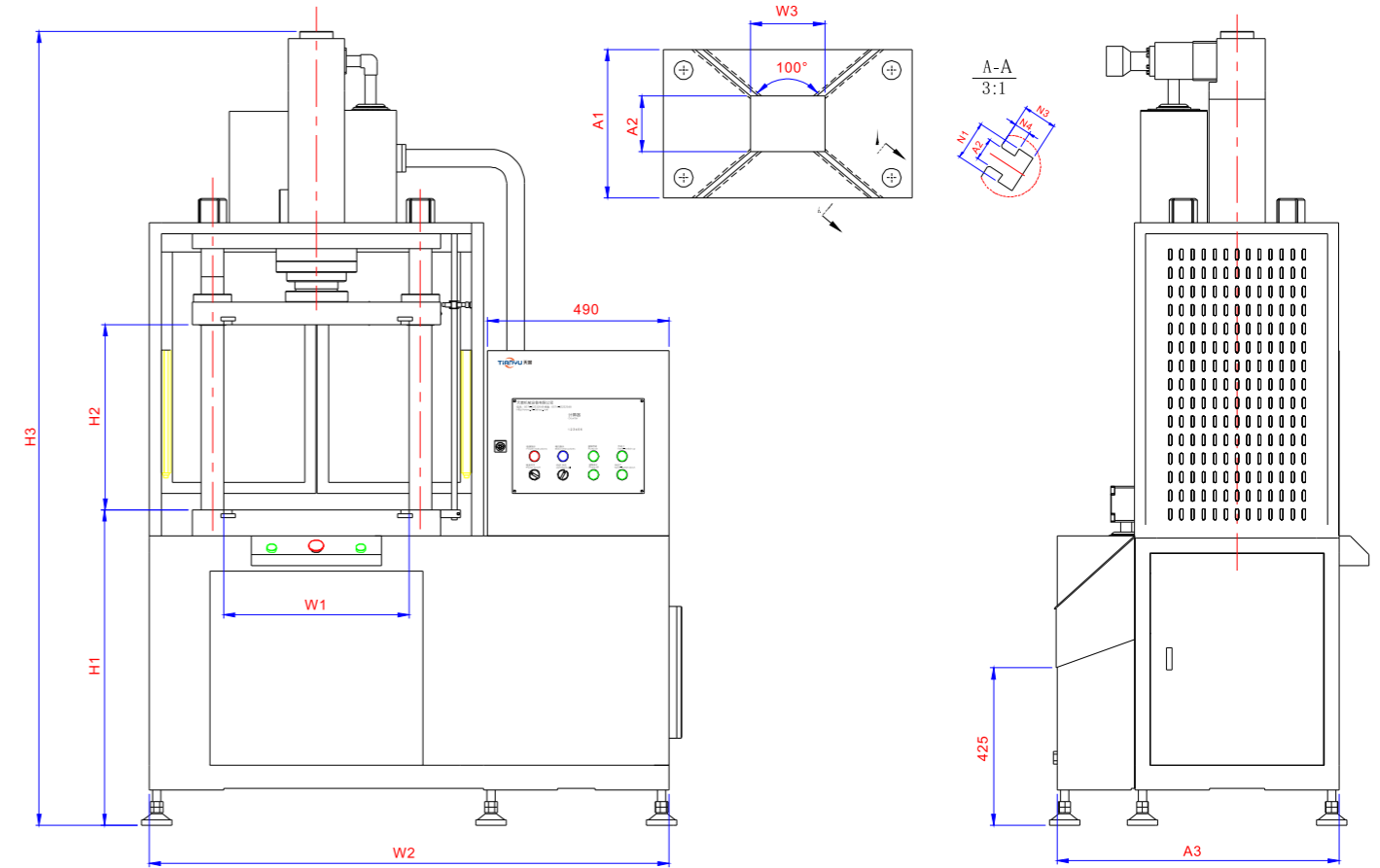
主要功能: Main functions:

- 四柱三板结构具有很强的导向能力，垂直精度高，运行稳定。
Four-column three-plate structure has a high guidance capability, featuring high vertical precision and stable running;
- 200kN或200kN以上出力采用增速液压缸，动作是先快后慢，噪音小、高效益、低能耗。
For the force of 200kN or above, the boosting hydraulic cylinder should be adopted. The action is firstly fast and gradually become slow, featuring low noise, high benefit and low energy consumption.
- 滑块采用上下电子感应器限位，寿命长，操作简单。
The slider is limited with the up-down electrical sensors with advantages of long service life and easy operation;
- 设有压力保护、限位、半自动、手动控制功能。
It's equipped with functions like pressure protection, limit, semi-automatic and manual control;
- 下工作台面可不开落料孔及加装发热装置。
A heating device can be installed on the up-down workbench.
- 安装有红外线护手装置。
An infrared protection device is installed.

机器外形尺寸表 Machine size table

项目Item	H1	H2	H3	W1	W2	W3	A1	A2	A3	N1-N2-N3-N4
TY305-100	850	500	2000	500	1400	200	400	150	760	14-25-21-11
TY305-200	850	500	2200	500	1400	200	400	150	760	14-25-21-11
TY305-300	850	500	2250	600	1500	200	450	150	760	14-25-21-11
TY305-400	850	500	2300	600	1500	200	450	150	760	14-25-21-11

产品线图 Product size chart



技术参数 Technical parameters

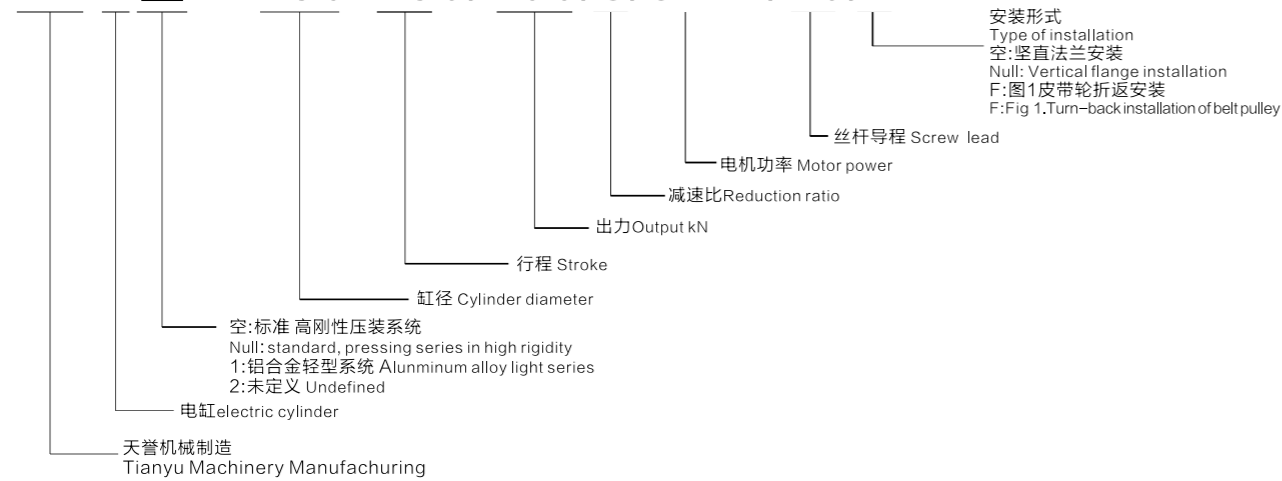
型号Model	TY305-100	TY305-200	TY305-300	TY305-400
油缸出力 cylinder pressure	30-100kN	40-200kN	50-300kN	60-400kN
液体压力 Liquid pressure	13Mpa	16.5Mpa	19.5Mpa	20Mpa
油缸行程 Cylinder stroke	250mm	250mm	250mm	250mm
下降速度 Decreasing speed	68mm/s	150mm/s	180mm/s	180mm/s
回升速度 Rising speed	90mm/s	100mm/s	130mm/s	120mm/s
工进速度 Rising speed	无NO	16mm/s	16mm/s	15mm/s
电机功率 Motor power	3.7kW	2.2kW	3.7kW	5.5kW
设备重量 Machine weight	800kg	1000kg	1200kg	1600kg
使用电源 Power supply	AC380V 50Hz			

如尺寸不能满足需求，请于本司洽谈
If the size can not meet the demand, please to the Secretary to negotiate

TYD直列式系列伺服电缸 TYD in-line series servo electric cylinder

电缸 Equipment name

TY D空 -150*250/100/8/3KW/10/F



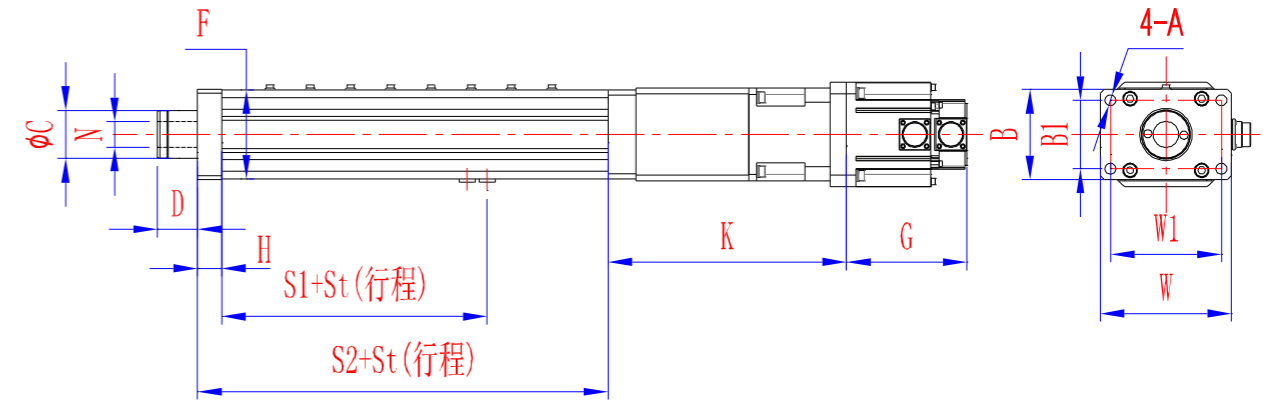
产品介绍: Product introduction

本伺服电缸是针对大出力压装场合而特别设计,电缸的整体刚性是市场传统电缸的3倍以上,因而减少了因压力波动造成的定位误差增加,该电缸内部配件均能承受额定出力下300%的过载能力。提升了大出力场合下的各种撞击能力。本电缸内部设有储油室,终身免维护。

The servo electric cylinder is specially designed for large output pressing occasions. The overall rigid intensity of the electric cylinder is 3 times more than that of the traditional electric cylinder. Thus, positioning errors caused by pressure fluctuation can be reduced. The internal parts of the electric cylinder can withstand 300% of overload capacity under the rated output, improving various impact and anti-risk capabilities under the large output. The electric cylinder is equipped with oil storage room, which is free of maintenance.



产品线图 Product size chart



型号Model	项目Item	出力	W	W1	A	B	B1	C	D	F	N	H	S1	S2	K	G
TYD-63*250/10/1/1.3kW/5		10kN	75	55	9	115	95	40	30	75	M32x2.0	20	80	170	135	122
TYD-100*250/30/8/1.8kW/20		30kN	112	85	13.5	163	138	60	40	111	M32x2.0	30	85	260	297	150
TYD-125*250/50/10/3kW/20		50kN	140	115	13.5	180	156	70	40	134	M32x2.0	30	85	330	307	178
TYD-150*250/100/6/7.5kW/20		100kN	165	125	17.5	250	210	85	50	165	M32x2.0	40	95	426	375	264

技术参数 Technical parameters

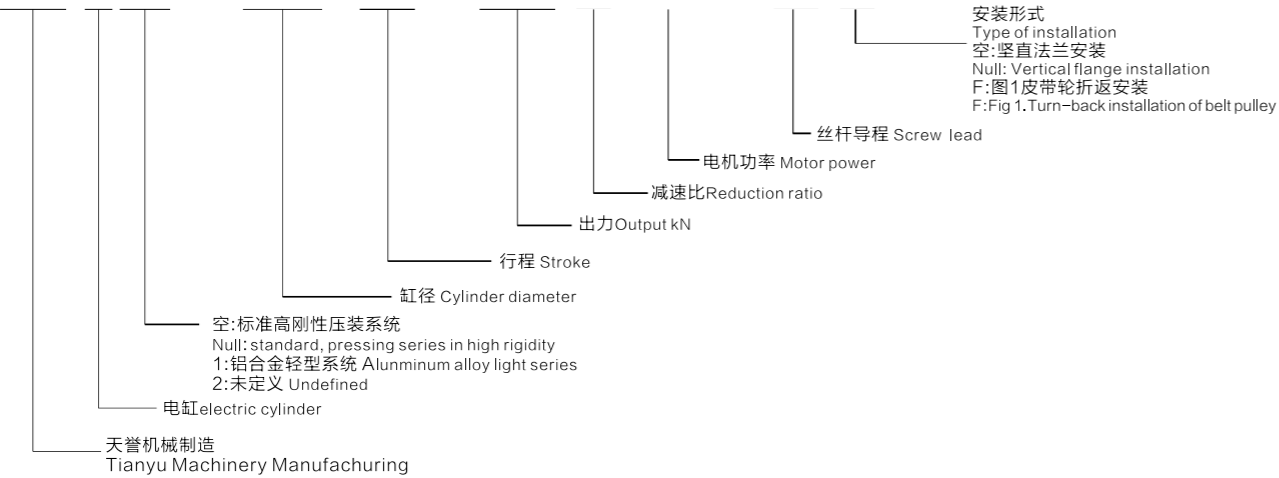
型号Model	TYD-63*250/10	TYD-100*250/30	TYD-125*250/50	TYD-150*250/100
额定出力	10kN	30kN	50kN	100kN
电机功率	1.3KW	1.8KW	3KW	7.5KW
丝杆导程	5mm	20mm	20mm	20mm
丝杆动载	16.5kN	39kN	57.4kN	114kN
丝杆刚性	0.43kN/um	0.54kN/um	0.87kN/um	1.12kN/um
减速比		8:1	10:1	6:1
最大伸出速度	250mm/s	125mm/s	100mm/s	166mm/s
最大返回速度	250mm/s	125mm/s	100mm/s	166mm/s
整体刚性	0.22kN/um	0.24kN/um	0.26kN/um	0.47kN/um
定位精度	≤0.01mm			
重量	37kg	45kg	68kg	190kg

如尺寸不能满足需求, 请于本司洽谈
If the size can not meet the demand, please to the Secretary to negotiate

TYD折返式系列伺服电缸 TYD in-line series servo electric cylinder

电缸 Equipment name

TYD空 -150*250/100/8/3KW/10/F



产品介绍: Product introduction

本伺服电缸是针对大出力压装场合而特别设计,电缸的整体刚性是市场传统电缸的3倍以上,因而减少了因压力波动造成的定位误差增加,该电缸内部配件均能承受额定出力下300%的过载能力。提升了大出力场合下的各种撞击能力。

本电缸内部设有储油室,终身免维护。

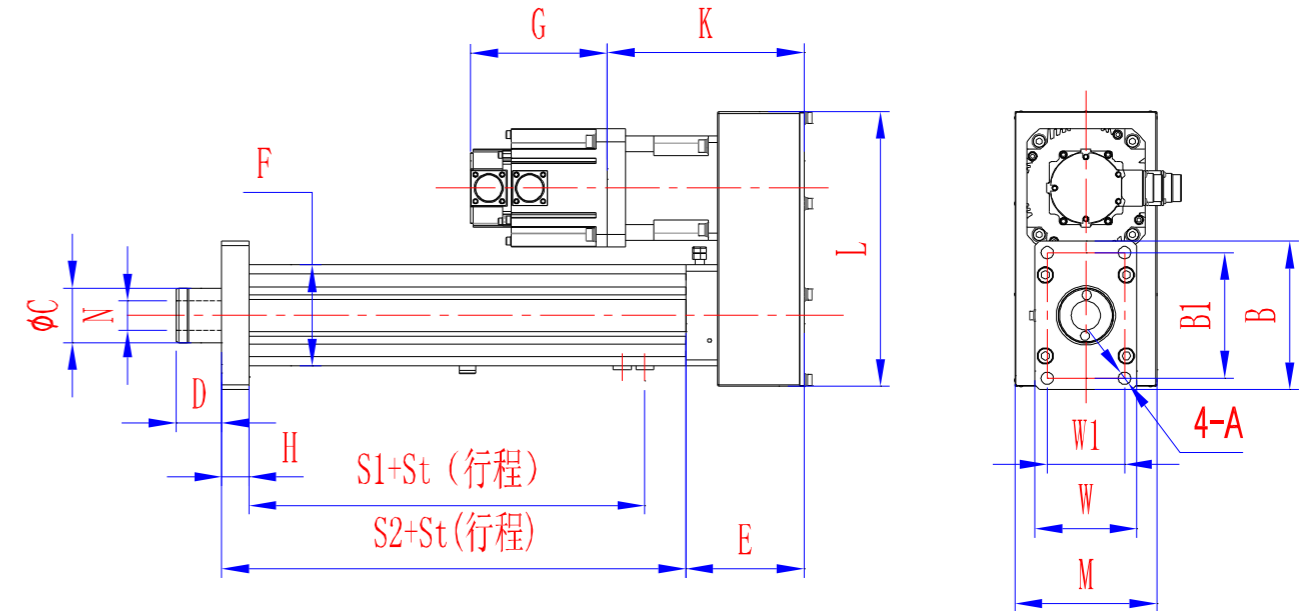
The servo electric cylinder is specially designed for large output pressing occasions. The overall rigid intensity of the electric cylinder is 3 times more than that of the traditional electric cylinder.

Thus, positioning errors caused by pressure fluctuation can be reduced. The internal parts of the electric cylinder can withstand 300% of overload capacity under the rated output, improving various impact and anti-risk capabilities under the large output.

The electric cylinder is equipped with oil storage room, which is free of maintenance.



产品线图 Product size chart



型号Model	项目Item	出力	W	W1	A	B	B1	C	D	F	N	H	S1	S2	K	G	L
TYD-63*250/10/1/1.3kW/5		10kN	75	55	9	115	95	40	30	75	M32x2.0	20	80	170	135	122	270
TYD-100*250/30/8/1.8KW/20		30kN	112	85	13.5	163	138	60	40	111	M32x2.0	30	85	260	297	150	302
TYD-125*250/50/10/3KW/20		50kN	140	115	13.5	180	156	70	40	134	M32x2.0	30	85	330	307	178	390
TYD-150*250/100/6/7.5KW/20		100kN	165	125	17.5	250	210	85	50	165	M32x2.0	40	95	426	375	264	430

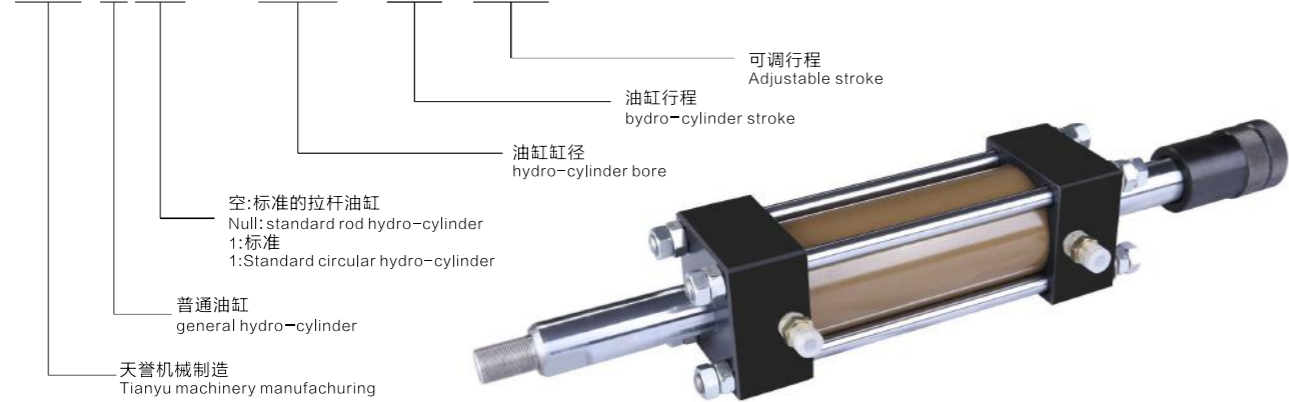
技术参数 Technical parameters

项目Item	型号Model	TYD-63*250/10	TYD-100*250/30	TYD-125*250/50	TYD-150*250/100
额定出力		10kN	30kN	50kN	100kN
电机功率		1.3KW	1.8KW	3KW	7.5KW
丝杆导程		5mm	20mm	20mm	20mm
丝杆动载		16.5kN	39kN	57.4kN	114kN
丝杆刚性		0.43kN/um	0.54kN/um	0.87kN/um	1.12kN/um
减速比			8:1	10:1	6:1
最大伸出速度		250mm/s	125mm/s	100mm/s	166mm/s
最大返回速度		250mm/s	125mm/s	100mm/s	166mm/s
整体刚性		0.22kN/um	0.24kN/um	0.26kN/um	0.47kN/um
定位精度		≤0.01mm			
重量		37kg	45kg	68kg	190kg

如尺寸不能满足需求, 请于本司洽谈
If the size can not meet the demand, please to the Secretary to negotiate

TYP系列拉杆油缸 TYP series rod hydro-cylinder

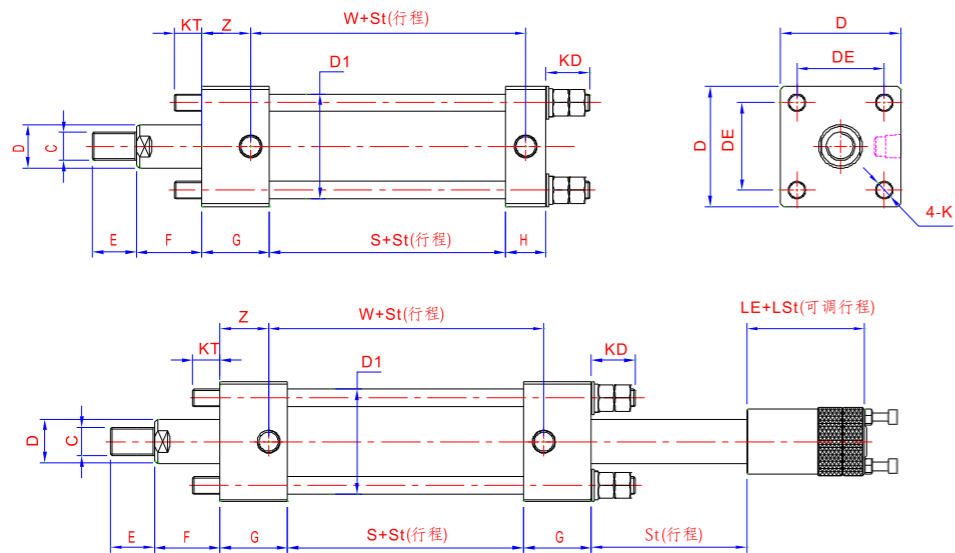
TY P空 -100*200/50



产品介绍:Product introduction

本拉杆油缸是我司针对压装行业特别改进设计,具有很高的抗偏载能力,有杆端采取双道U形圈设计,改系列油缸最高耐压16Mpa.
The rod cylinder is especially designed and improved for the pressing industry, which has high inclined loading proof capability; the rod end is designed with double U-rings. Maximum pressure endurance of the series of the cylinder is 16 mpa.

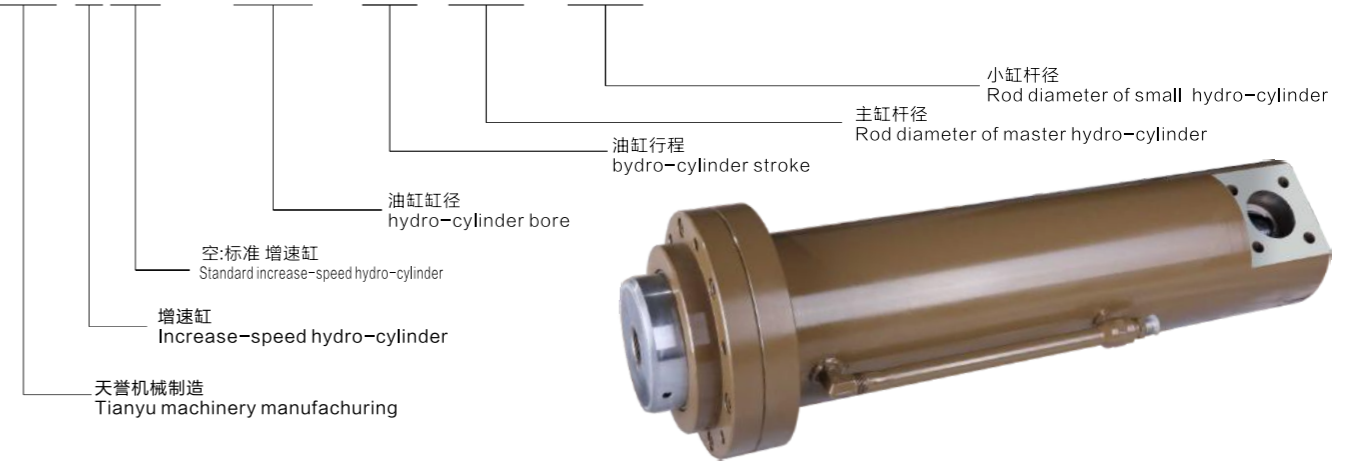
产品线图 Product size chart



项目Ltem	型号Model	H1	C	D	E	F	G	K	H	Z	DE	KD	KT	D1	W	S	LE
	TYP-63*SZ		M26x1.5	φ35	40	57	60	φ15	32	45	65	22	25	100	96	66	58
	TYP-80*SZ		M26x1.5	φ40	40	57	65	φ17	37	47.6	80	24	25	110	100	66	58
	TYP-100*SZ		M30x1.5	φ50	60	85	70	φ19	45	52.5	95	49	30	130	111	76	65

TYZ系列快速油缸 TYP series fast hydro-cylinderx

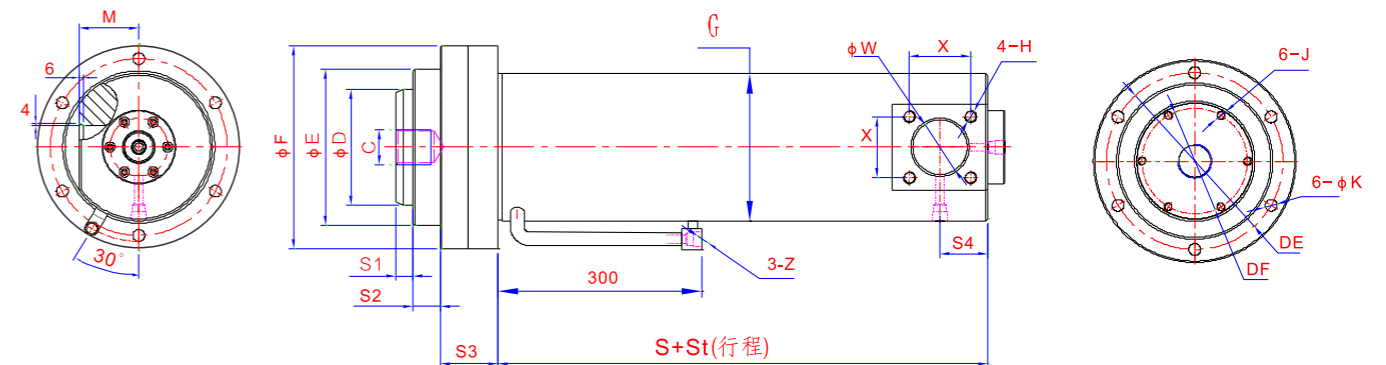
TY Z空 -140*400/132/45



产品介绍:Product introduction

本系列快速油缸是我司针对压装行业特别改进设计,具有很高的抗偏载能力,活塞杆均通过调质、高频处理、镀硬铬,等多道标准工艺,该系列油缸最高耐压21Mpa.
The cylinder is especially improved for the pressing industry, which has high inclined loading proof capability; The piston rod is processed by various standard technologies, like conditioning, high-frequency processing and hard chromium plating. Maximum pressure endurance of the series of the cylinder is 21 mpa.

产品线图 Product size chart



型号Model 项目Ltem	C	D	E	F	G	H	K	M	X	W	Z	S	S1	S2	S3	S4	DE	DF	J
TYZ-110*ST/100/40	无	100	145	198	φ138	M16	φ12	50	75	50	ZG3/8	270	30	25	77	60	φ170	φ70	M10
TYZ-125*ST/115/40	M36x2.0	115	165	218	φ165	M16	φ14	60	75	62	ZG1/2	253	30	25	77	60	φ190	φ70	M12
TYZ-140*ST/132/45	M36x2.0	132	185	245	φ178	M16	φ14	65	75	62	ZG1/2	263	30	25	77	60	φ212	φ70	M12
TYZ-150*ST/140/45	M36x2.0	140	185	245	φ178	M16	φ14	65	75	62	ZG1/2	253	30	25	77	60	φ212	φ70	M12
TYZ-160*ST/150/45	M36x2.0	150	195	257	φ192	M16	φ16	80	75	62	ZG1/2	263	30	25	77	60	φ222	φ70	M12
TYZ-180*ST/170/50	M82x2.0	170	230	298	φ217	M20	φ18	90	90	80	ZG1/2	308	30	30	87	70	φ260	φ85	M14